

Call on One of These Front Rank

CROSLEY

DEALERS

And let him show you why Crosley Receivers are holding their place in the Front Ranks of Radio:

LOS ANGELES

South

DAVIS RADIO CO.
2817 S. Main St.
WEstmore 6948
DE HOOG BROTHERS
6120 S. Broadway
THornwall 0224
STURGIS MUSIC CO.
4711 S. Broadway
AXridge 7106

Downtown

FRANK RADIO CO.
715½ S. Main St.
TUcker 3347

Hollywood

OTTO K. OLESEN
ILLUMINATING CO.
6548 Hollywood Blvd.
GLadstone 5194

Southwest

CHILOS LABORATORY
1187 W. 24th St.
BEacon 7445
CLARK'S RADIO STORE
9114 S. Vermont Ave.
YOrk 1914
COLLINGS HARDWARE CO.
3425 S. Vermont Ave.
BEacon 7025

GRAND AVE. RADIO CO.
2205 S. Grand Ave.
WEstmore 6508

WESENERG RADIO MUSIC
Co.
3819 S. Western Ave.
VERmont 7929

Northeast

BROOKLYN RADIO SHOP
1521 Brooklyn Ave.
ANGelus 3296

NORTON & NORTON
2211 N. Broadway
CApitol 0484

Glassell

GEORGE F. CONFER
2932 W. Ave. 37
ALbany 5443

ALHAMBRA

ALHAMBRA RADIO ELECTRIC
1855 W. Main St.
Alhambra 2366

ARTESIA

EDWARD M. CORCORAN
Artesia 5159

BELL

G. C. PYLE ELECTRIC CO.
605 Baker Ave.
DElaware 2287

GLENDALE

BUDWIG RADIO CO.
201 N. Brand Blvd.
Glendale 1801

LONG BEACH

JOHN J. SAWYER
543 E. Anaheim St.
Long Beach 636-235

RIALTO RADIO CO.
430 American Ave.
Long Beach 653-171

RELIABLE RADIO SHOP
208 E. 4th St.
Long Beach 636-450

PASADENA

MODEL RADIO SHOP
2336 E. Colorado St.
Colorado 5992

SANTA BARBARA

J. E. WILEY
San Marcos Bldg.
Santa Barbara 3971

CROSLEY RADIOS

"Everything You Can Ask in Radio"



*"Turn One
Dial to Get
Everything
On the Air"*

The Radio Surprise of the Season

Everyone has been waiting for it — a dependable set which combined everything in one cabinet, yet a radio set which was simple—and now it is on the market. A famous set that sweeps the ether with one dial, combined with nationally recognized equipment. It is known as the

Holmes ^{ONE} DIAL Combination

A five-tube tuned radio-frequency set which has already made thousands of friends. This is combined in a beautiful cabinet with a HOLMES sweet-toned Cone Speaker, five tested and matched CeCo "long distance" tubes, and a PHILCO Socket Power unit. No batteries—no wires—all in one cabinet. The price complete, with installation, is \$245.00.

Use the Coupon NOW!

The Coupon below will bring you at once full information regarding this remarkable combination. SEND IT IN TODAY. In the meantime, get in touch with your dealer, who will arrange a free demonstration in your own home. If he hasn't one in stock, call WE 5128 and we will send a factory expert to install one in your home.

---TEAR OUT AND MAIL TO---

A. J. Tobey Co.

Fifteenth and Hope Streets, Los Angeles

Please send me full information about the HOLMES Combination Offer.

Name.....

Address.....

City..... State.....

Dealer's Name..... Address.....

New York Office
J. W. HASTIE
155 East 42nd Street
Vanderbilt 4661

Chicago Office
A. G. RUDOLPH
500 N. Dearborn St.

San Francisco Office
CONGER & MOODY
Sharon Building
Kearney 3483

Radio Doings

Trade Mark Reg. U. S. Pat. Off.

407 East Pico Street, Los Angeles, Calif.

"The Red Book of Radio"

H. C. CHARLES
Editor

J. S. MILLER
Associate Editor

Phone Westmore 1401

KENNETH G. ORMISTON
Technical Editor

MAJ. LAWRENCE MOTT
Associate Editor

(Entered as second-class matter, Nov. 25, 1922, Los Angeles, Cal., Post Office, under Act of March 3, 1879.)
Copyright, 1926, by Horwood Publishing Co.
Issued Weekly. Ten Cents a Copy. Three Dollars a Year. Canada and Foreign Countries, \$3.50 per Year.

Vol. X · Los Angeles

MARCH 26, 1927

San Francisco

No. 13

IN THIS ISSUE

Second Prize Program Letter	- - - - -	12
Radiograms	- - - - -	13
Radio Topics of the Day	- - - - -	16
Fourth Prize Contest Winner	- - - - -	17
The Woman's Page	- - - - -	18
Picked Out of the Air	- - - - -	19
DX Club Correspondence	- - - - -	20
Koo Koo Kolyum	- - - - -	21
The Trouble Shooter	- - - - -	22
Time Tables	- - - - -	- 24 to 34
Schedule of Dx Stations	- - - - -	36
Detailed Programs	- - - - -	- 42 to 74
Timely Trade Topics	- - - - -	77
Both Sides of the Mike	- - - - -	78

ONLY \$3.00 A YEAR

Have RADIO DOINGS mailed to your home every week. Fill out blank below. Either mail to us, or your dealer will be glad to take care of it for you. Please indicate whether NEW or RENEWAL.

HORWOOD PUBLISHING CO., 407 E. Pico St., Los Angeles,
CONGER & MOODY, Sharon Building, San Francisco, Calif.

Gentlemen: I enclose \$3.00, for which send me RADIO DOINGS for one year.
NEW—RENEWAL.

Name _____

Address _____

Double Your Stations

Penetrate Interference

Cut Through Locals by Adding Penetrola to Your Present Radio Set



Penetrola transforms your old radio set into a powerful, up-to-date receiver. It gives greater range and volume and real selectivity. It stops radiation and "blooping." It is easily attached and operates with any set.

PRICE
\$35

Penetrola is manufactured by the makers of the Walbert Isofarad Receiver—the most advanced radio receiver on the market. If you do not already own a radio receiver, let us tell you about the Isofarad with Penetrola built in.

Walbert Penetrola

If Your Dealer Can't Supply You, Mail the Coupon

C. W. SMITH CO.

"The Home of Utah Speakers"

Gentlemen:

Enclosed please find check or money order for \$35 for which please send me one Walbert Penetrola. If at the end of 3 days it does not perform to my entire satisfaction I will return it and you will refund my money.

Loop Type Outdoor aerial type
(Check which type of set you own)

Send me complete information about the Walbert Isofarad receiver without obligation.

NAME.....

ADDRESS.....

1125 Wall St.

LOS ANGELES, CAL.

WEStmore 3291

The New

Hexadyne 6-Tube

PORTABLE



NEW IMPROVEMENTS WITH BEAUTY AND SIMPLICITY

**SINGLE DIAL CONTROL
OPERATES WITH A LOOP
EXCEPTIONAL DISTANCE**

The Hexadyne stands today not only as the leader in the portable field but the recognized standard of advanced radio engineering. No other portable radio on the market compares with the Hexadyne for beauty of tone and simplicity of operation.

List Price \$125.00 Complete with All Accessories
Including the New Power Tube

Dealers Write at Once for Attractive Proposition

Manufactured by W. D. Hunt Co., Inc., 4961 Sunset Blvd., Los Angeles
Telephone OL. 3104

WHOLESALE DISTRIBUTORS

C. W. Smith Co.
1128 Wall St., Los Angeles

Pacific Wholesale, Inc.
1320 S. San Pedro, Los Angeles

CeCo "K" Tubes Clarify the Air

Dial the Station You Want—
You'll Get It Every Time

New

MAP OF U.S. SHOWING
CROWDED CONDITION
OF BROADCASTING
STATIONS

LOS ANGELES CE-CO DEALERS

J. C. Rindler
625 S. Main
Philo Sales & Service
1514 South Hope
Standard Radio
417 W. Pico
Walkers Radio
3835 S. Vermont
Clen H. Deamer
6507 S. Kansas
Rogers Electric
1265 S. Norton
H. H. Walker
1327 Venice Blvd.
Sturgis Music
4715 S. Broadway
Nielsen & Nelson
6320 Union
Tivoli Radio Shop
4204 S. Central
Williams Radio Mfg. Co.
5117 S. Central
Phair Radio Co.
242 E. Florence
Haseo Radio
7322 S. Broadway
McWhorter's Radio
6823 S. Vermont
Henderson Radio Store
1805 Whittier
Johnson Auto Supply
765 Atlantic Blvd.
Atwater Radio Shop
2708 Cienfuegos Blvd.
Holland Electric Shop
5632 Pasadena Ave.
McNeil Music Co.
5711 Pasadena Ave.
Brioni & Bushard
1717 W. Adams

Hear How CeCo Tubes Improve Radio Reception

Let Your Ears Be the Judge
at Any CeCo Dealer

You'll immediately note the improved clearness in tone. Even distance is increased by these super-sensitive tubes. Sharp tuning CeCo tubes help you to single out the station you want in crowded localities. Voices

come in natural and every music note is perfect. There's a CeCo Tube for every socket. Your CeCo Dealer will tell you the right combination for your particular radio set. See him today!

A. J. Tobey Co.

Radio Accessory Jobbers

15th and Hope Sts.

Westmore 4038

HOLLYWOOD

Cutler Radio
930 N. Western
Hollywood Radio
709 N. Western
Hollywood Electric
6656 Hollywood Blvd.
Mohawk Battery & Radio
2115 Sunset Blvd.
Doran Electric Shop
7515 Sunset Blvd.
Loyinger-Melrose Radio
4425 Melrose
Melrose Radio
5663 Melrose
Washelli Radio
7406 Melrose
Carmel Radio
8165 Santa Monica Blvd
Hetzl Radio
7915 Santa Monica Blvd.

OUT-OF-TOWN CE-CO DEALERS

ALHAMBRA
Baird Radio Shop
226 W. Main St.
MONTREY PARK
Montreay Park Music Co.
102 E. Garey
GARDEN GROVE
W. E. Ashley

PASADENA

Thomas & Summerville
41 N. Broadway
Webster Electric Garage
168 E. Union
GLENORA
F. A. Selmers
LANKERSHIM
Lankershim Music Co.
W. L. Bain
3641 Lankershim Blvd
VAN NUYS
Van Nuys Music Co.
Marsden Electric
CULVER CITY
H. E. Blunt
6686 Putman
INGLEWOOD
Inglewood Mercantile Co.
120 N. Commercial St.
AVALON
Avalon Radio
607 Crescent
WILMINGTON
Wilmington Variety
716 W. Anaheim

LONG BEACH

Koh Radio
Cor. 4th and Locust
HUNTINGTON PARK
H. L. "Radio" King
116 E. Irvington

BELLFLOWER

H. L. Petersen Shoppe
Pacific and Mayne

DOWNEY

Darnell Electric Shop
1182 Crawford St.

POMONA

Falls Tire & Battery Co.
201 E. 2nd St.
TUSTIN
Williams Super Service
Coast Highway
ELSINORE
Elsinore Plumb. & Etc.
REDLAND
Dale El Silger
State and Third St
ANAHIM
Caverly Radio
217 W. Center
BREA
Bonnet's Radio
Murray Garage & Service
Station

CARLSBAD

Carlsbad Pharmacy
EL CAJON
El Cajon Electric
CORONADO
W. C. Bechal Liberty
Garage & Batt. Serv.
716 Third St.

PACIFIC BEACH

Sunset Super Service
Station

SAN DIEGO

1802 Garnett
College Service
Park and El Cajon
Maryland Auto Supply
7th and F St.
E. C. Grube
8th and Imperial
Kinsey Bros.
30th and A St

Hear How CeCo Tubes Improve Radio Reception

Let Your Ears Be the Judge
at Any CeCo Dealer

You'll immediately note the improved clearness in tone. Even distance is increased by these super-sensitive tubes. Sharp tuning CeCo tubes help you to single out the station you want in crowded localities. Voices

come in natural and every music note is perfect.

There's a CeCo Tube for every socket. Your CeCo Dealer will tell you the right combination for your particular radio set. See him today!

A. J. Jobey Co.

Radio Accessory Jobbers

18th and Hope Sts.

Westmore 4038

HOLLYWOOD

- Cutler Radio
930 N. Western
- Hollywood Radio
709 N. Western
- Hollywood Electric
6656 Hollywood Blvd.
- Mohawk Battery & Radio
2115 Sunset Blvd.
- Doran Electric Chop
7515 Sunset Blvd.
- Lovinger-Melrose Radio
4426 Melrose
- Melrose Radio
5663 Melrose
- Webbly Radio
7406 Melrose
- Carmel Radio
8165 Santa Monica Blvd
- Metall Radio
7915 Santa Monica Blvd

OUT-OF-TOWN CE-CO DEALERS

- ALHAMBRA
Baird Radio Shop
226 W. Main St.
- MONTEREY PARK
Monterey Park Music Co.
102 E. Garey
- GARDEN GROVE
W. E. Ashley

PASADENA

- Thomas & Summerville
41 N. Broadway
- Webster Electric Garage
100 E. Union

GLENDORA

- F. A. Seimors

LANKERSHIM

- Lankershim Music Co.
W. L. Bain
5241 Lankershim Blvd.

VAN NUYS

- Van Nuys Music Co.
Marsden Electric

CULVER CITY

- H. E. Blunt
6808 Putman

INGLEWOOD

- Inglewood Mercantile Co.
120 N. Commercial St.

AVALON

- Avalon Radio
667 Crescent

WILMINGTON

- Wilmington Variety
716 W. Anaheim

LONG BEACH

- Kohn Radio
Cor. 4th and Locust

HUNTINGTON PARK

- H. L. "Radio" King
116 E. Irvington

BELLFLOWER

- H. L. Peterson Shoppe
Pacific and Mayne

DOWNY

- Darnell Electric Shop
1182 Crawford St.

POMONA

- Falls Tire & Battery Co.
201 E. 2nd St.

TUSTIN

- Williams Super Service
Coast Highway

ELSINORE

- Elsinore Plumb. & Elec.

REDLAND

- Dale El Slinger
State and Third St

ANAHEIM

- Caverley Radio
117 W. Center

BREA

- Bennet's Radio
Murray Garage & Service
Station

CARLSBAD

- Carlsbad Pharmacy

EL CAJON

- El Cajon Electric

CORONADO

- W. C. Bechal Liberty
Garage & Batt. Serv.
718 Third St.

PACIFIC BEACH

- Sunset Super Service
Station
1002 Carnett

SAN DIEGO

- College Service
Park and El Cajon
- Maryland Auto Supply
7th and F St.
- E. C. Grube
5th and Imperial
- Kinney Bros.
10th and A St.

To Have The Best Receiver

Buy the Parts and Build It Yourself

USE ANY OF THESE—THEY ARE ALL GOOD

BOULDERADIO EIGHT-IN-LINE UNIT, Two Tuning Condensers, Rheostat, Two Dials, Midget Condenser and Front Panel, are all that is necessary to complete one of the most selective supers. Beautiful tone and lots of volume. Only nine simple connections to make to unit. List Price of Eight-in-Line Unit—\$95.00.

MADISON MOORE "One Spot" Transformers are here. No more harmonics. Get a line on these—one of the biggest improvements of the year.

Look over the **630 Complete Kit of Parts for the SILVER SHIELDED SIX**. Kit includes all Specified Matched Parts for the Set. Completely Shielded—using the famous 220 Audio and 221 Output Transformers, \$95.00—A Set Good for Years.

The Kit of Parts for the **KARAS EQUIMATIC** lists at \$60.20, and will produce a Set mighty hard to beat. Karas' latest.

All Parts for the **IMPROVED INFRADYNE** as Specified by inventors now here. Complete Data in the Official Manual—25c Send for it now.

DEALERS: Park Next Door at Our Expense

Radio Supply Co.

WHOLESALE

920 S. Broadway

VA. 6063

Los Angeles

New 1927 Catalogue Now Ready—Send For It

Changes Are Made

Every day in Radio—and to keep your set abreast of the times—you will need new parts. The largest up-to-date stock of parts is at 920 South Broadway. Have your dealer pick up what you need.

Alco Loops	Dubilier Condenser Corp.	Analid Trapbolic Units, Etc.
Accurate Dials	Dundo Mfg. Co. Wire	National Co. Parts
Acme Apparatus	Dunham Loops	Neon Products
Acme Trickle Chargers	Ely Binding Posts	Penrite Mfg. Co.
Advance Crystals	Eight-in-Line Super Unit	Condensers
Aero Products	Elko Ground Clamp	Race Aerial Wire
Aerovox Wireless Products	Electrad Products	Radial Co. Amperite
Alden Mfg. Co. Parts	Electrostat Solderless Irons	Realand Lyric Transformers
All-American Products	Elkon Chargers	Raytheon Tubes
Amertran Products	Formal Insulation Co.	Reuler Products
Ampertec	France B. Batteries	Samson Transformers
Amaro Condensers	Front Products	Sargamo Condensers
Arco Cells	General Radio Parts	Sensory Insulators
Balkite Chargers, Etc.	Goodrich Rubber Panels	Silite Trickle Chargers
Benjamin Elec. Mfg. Products	Hammond Products	Silver Marshall Products
Boulderadio Eight-in-Line Super Unit	Harbucan Kits	Sounding Sabelite
Branston Cells	Hedgcock Transformers	Ultronic Eliminator
Bremer-Tully Products	H-K Solderdrip Lugs	Wester Meters and Testers
Camfield Cells	Hoschek Parts	Stevens Tools
Carbonadum Products	Jefferson Products	Teatrite Hydrometers
Cardwell Condensers	Karas Products	Thordarson Transformers
Carrier Products	Kelbrachels	Therion Cells
Ceco Tubes	Kellogg Parts	Thyrite Condensers
C. E. L. Var High Resistances	Kodol Products	Tom Mack Products
Chicago Kester Solder	Kura-Kash Dials and Knobs	Tower Speakers
Classical	Leaf-Burkhard Cone Speakers	Trimmer Speakers
Continental Condensers	Leuco Transformers	Universal Battery Clips
Crescent Transformers	Madison Moore Units	Vesta Power Units
Dayco Radio Parts	Marcus Products	Victrolac Parts
Dejar Rheostats	Mignot S. L. F. Condensers	Western Products
Deluxe Products	Muller Universal Clips	Willard Batteries
Defendant Speakers	Miter Lightning Arrestors	X. L. Varcondensers
Degussa Products		Yaxley Products

THORDARSON, ALL-AMERICAN AND MAGNAVOX REPLACEMENT TRANSFORMERS IN STOCK

VESTA 35 and 50 Amp. and HOBCO A Power Units

ACME, GENERAL RADIO, ALL-AMERICAN, KODEL, BALKITE, SILVER MARSHALL, STERLING and WEBSTER ELMINATORS

ACME, STERLING, VESTA, BALKITE, TUNGAR and SILITE TRICKLE CHARGERS

DEALERS: Park Next Door at Our Expense

RADIO SUPPLY CO.

WHOLESALE

920 S. Broadway

VA. 6063

Los Angeles

New 1927 Catalogue Now Ready—Send For It

Second Prize Program

In this week's RADIO DOINGS we present the Prize Broadcasting Program of Classical Music. Two prizes are being given in this contest because of the superiority of two letters—one of popular music and ballads, which was printed last week, and one of classical presentation which is published below.

This week's prize, a \$67.50 Pemco Heavy Duty A and B Eliminator donated through the courtesy of the Precision Electric Company, goes to the winner. This conception of an ideal program will be broadcast over KMTR Monday evening, March 28th, from 9 to 10, under the auspices of the Precision Electric Company. Listen-in, everybody!

MILTON W. LEARN
5316 LOCKHAVEN AVE.
EAGLE ROCK, CALIF.

February 28, 1927.

Contest Editor,
Radio Doings,
Los Angeles, Calif.

My idea for a one-hour program would consist of the following numbers:

"Toreador Song," from "Carmen"
California Russian Stringed Orchestra

"Serenade," by Schubert
Tenor Solo by Ivan Edwards

"Barcarolle," from "Tales of Hoffman"
California Russian Stringed Orchestra

"Anitra's Dance"
Violin solo by Chico de Verde

A. Prologue from "Pagliacci"
B. "On the Road to Mandalay"
Tenor solos by Ivan Edwards

A. Intermezzo from "Cavalleria Rusticana"
B. "Chinese Dance" from the "Nutcracker"
California Russian Stringed Orchestra

"Mucushla"
Tenor solo by Ivan Edwards

"March Militaire"
California Russian Stringed Orchestra

I have taken all classical numbers, as counts taken up by radio stations show that the greater share of the public wants classical music. I have tried to pick out compositions that have melodies to them and tunes that can be hummed. I have tried to balance the program so that it would not drag. I feel sure that there are many who would like to hear many selections from the operas on one program.
(Signed) MILTON W. LEARN.

Don't forget the date—Monday evening, March 28th, from 9 to 10, over KMTR.

Radiograms

From

CLOYD MARSHALL, JR.

Suicide

Self-destruction by so many young college students has caused a storm of comment from educators and theologians.

The trouble seems to settle squarely upon the shoulders of the parents. They send their young sons and daughters away to college, where they receive a smattering of cynical philosophy and bewildering psychology. Not having mature minds, they do not understand the theories expounded, and naturally use it in the wrong way. They can be likened unto a high speed motor with a great potential power, but without a "balancer" or "stabilizer." The parents should prepare their children to receive such information, but instead of instructing them in the sensible things they send them away to receive a lot of theoretical information about life which they do not understand. There is too little teaching of children by the parents for the parents seem to feel the children should be taught entirely by professional teachers. You will notice that the people who have committed suicide are usually of the type termed "intellectuals." It is a case of over-education in theory and a woeful lack of experience in the actualities of life.

The ones who destroy themselves are not brave. They are really cowards, because the great adventure is LIFE, not DEATH, and it takes COURAGE to carry through to the natural end. Ask any soldier who has been under fire.

We Humans

We human beings often are not only funny, but sometimes positively ridiculous. Turning from the conventionalities of common beliefs some become atheists, others iconoclasts, socialists and some of the women follow the doctrines of Lucy Stone, Mrs. Parkhurst and others. Did you ever notice, however, that even the most extreme atheist usually rests more easily on the threshold of the Great Beyond when under the enlightening administrations of Priest or minister—that the iconoclast in times of great distress places his faith in the very laws and institutions that he has spent his life condemning—that the socialist, such as Emma Goldman, after experiencing the fearsome vicissitudes of Socialistic Russia, pulls possible strings to get back into a safe and sane country like our good old U. S. A.—that the suffragettes, for all their ultra modern ideas to be applied to women, usually favor an old-fashioned wedding.

General Rosalie Gardiner Jones' marriage to U. S. Senator Clarence C. Dill is a vivid example. Why even the Lucy Stoners demand that their children carry the father's name.

We do some funny things on the long and sometimes rough road from birth to death, but at the beginning and at the end we are ourselves Mother Nature's children. Since we do not come into this world or leave it of our own volition, we should take advantage of the opportunity when we have control of our time and action and use both to the greatest advantage to ourselves and others.

President of Maier Brewing Co. says

Everywhere you go you hear people talking about the Preston "DX" Radio Ground. Those who have tried it out are enthusiastic about it... those who have heard their friends talk about it are coming to see us... writing to us... telephoning to us... all asking for information. We believe that half the radio sets in Los Angeles will soon be equipped with Preston's sensational invention.

C.H. PRESTON'S

"DX"
Long Distance
Radio Ground
PATENT APPLIED FOR

PRICE \$8.00

Notice to Dealers

Write, phone or telegraph to our nearest sales office for details regarding our liberal dealer arrangement. There are hundreds of radio enthusiasts in your territory who will buy the "DX" Radio Ground and be glad of it. Don't miss these sales, and the resulting profits.

IT DOES THE WORK

The Preston "DX" Radio Ground is not an experiment. It has long passed that stage. Two years were spent in perfecting it... it was tested out under all conditions for six months before it was offered for sale. It is sold with a guarantee that it will increase both volume and selectivity and give more volume on signals of distant stations. Used on the antenna post of your set (no matter what make or model radio you own), it will cut down harmonics, lessen static almost to a point of elimination, and improve tone qualities.

IT NEVER WEARS OUT

There have been patent grounds offered for sale that, for a few days, performed wonderfully... they faded away... eaten up with their own chemicals. The PRESTON "DX" Radio Ground is guaranteed to be a permanent ground. It can be installed in a few minutes... it will modernize your radio. GET ONE TODAY FROM YOUR DEALER, or order direct if he does not have it.

UNGAR & WATSON, Inc.

National Distributors
1366 South Figueroa Street - Los Angeles

THE SEROY CO.

Distributors for the Gulf, Oregon & Washington
122 Broadway - Oakland, Calif

First for Tuesday



IT'S THERE

Maier Brewing Company
LOS ANGELES, CALIF.

LIGHT AND DARK
BREWERY

March 19, 1927.

Mr. C. H. Preston,
11285 Ventura Blvd.,
Los Angeles, Calif.

Dear Sir:-

Since the inception of the radio, I have been an ardent devotee thereof and have tried many makes with varying degrees of success. I have tried them far below sea level to high altitudes, and from locations in Los Angeles where the interference was of the worst, to very seaports, to say the least, when I compare them to the results I have now obtained with the DX Ground which you make.

My experience with distance reception at my home has always, up to the receipt of your DX Ground, been most discouraging. I have tried at least forty different make of receiving sets, with the above results, but in the first hour with your Ground, I caught eleven stations at a distance as great as San Francisco to Omaha. Before this I could not get San Francisco or Oakland.

This letter is inspired only by the marvelous results I have received from your DX Ground, and you may use it as you see fit, for I know it will prove to be a boon to all radio users.

Sincerely yours,

Ed R. Main

25M:14

NO LETTER LIKE THIS WAS EVER RECEIVED FOR A PRODUCT NOT WORTH WHILE!

Ordinary testimonial letters are often influenced in various ways... they usually fail to carry weight. It takes genuine performance of a REAL product to bring forth letters such as that reproduced above. Mr. Maier is one of the best known citizens and business men in the biggest city on the Pacific Coast. His letter MEANS SOMETHING.

Radio Topics of the Day

A Weekly Review of Radio News, Thought and Opinion

TO MAKE AMENDS TO CANADA

It may be said authoritatively that one of the first international situations the new radio commission will concern itself with will be an effort to renew the gentlemen's agreement we have had with regard to a reciprocal broadcasting arrangement between the United States and Canada. It is understood that this was the principal point of discussion upon the recent visit here of the Canadian delegation, including Alexander Johnston, deputy commissioner of Marine and Fisheries, and C. P. Edwards, director of radio for the Dominion of Canada.

Now that our radio commission is established and functioning, this matter will assuredly receive their earliest consideration because of the embarrassment caused to this Government by broadcasters refusing to heed the plea of Secretary Hoover to stay off all Canadian wave lengths.

PREDICT COMMUNICATIONS COMMISSION NEXT

There appears to be a very distinct impression at the Capitol that the National Radio Commission just created by congress may be enlarged into a communications commission, embracing the control not only of radio, but telephone, telegraph and cables, now within the jurisdiction of the badly overloaded Interstate Commerce Commission.

ORGANIZATION OF COMMISSION

The Federal Radio Commission, an independent branch of the Federal Government, held its first formal meeting on call of the chairman. Rear Admiral William H. Bullard, on Tuesday, March 15, at 10 a. m. The chairman was unable to be present, but sent a call for the meeting by radio and cable from China. It is expected that Chairman Bullard will be in Washington the first part of April. For the purpose of effecting immediate organization, the commission elected Judge Eugene O. Sykes of Mississippi as vice chairman. Other members of the commission present were O. H. Caldwell, New York; H. A. Bellows, Minnesota, and J. F. Dillon, California.

AUSTRALIAN BEAMS TO REACH UNITED STATES

The beam wireless service between Australia and England has been developed to such an extent that it will be available for telegrams to and from the United Kingdom and all European countries, and the beam service between Australia and Canada will be used for telegrams to and from Canada, the United States and South America. Beam stations are being built in Victoria, although the transmitting apparatus is at Ballan, 50 miles from Melbourne, and the receiving apparatus is at Rockbank, 15 miles from Melbourne, with the actual operation in the city of Melbourne proper.

PIERSON W. BANNING WINS RADIO DOINGS FOURTH CONTEST

Many wonderful letters have come to us from our friends suggesting improvements to be made in our Little Red Book of Radio.

We certainly appreciate the response to the Prize Program that was announced in our issue of February 26th. It shows us that our readers are interested in RADIO DOINGS and want to help us render a greater service to the Radio Listeners-in of the West.

Mr Banning's letter was full of good constructive criticism and helpful suggestions on how to make RADIO DOINGS more interesting to its readers. Space will not allow us to publish all of Mr. Banning's letter, but his letter suggested some of the following improvements:

1. Publish more photographs and illustrations of the artists and entertainers and of the studios.
2. A How to Build Department—giving diagrams of the newest circuits, and how to build them.
3. Re-establish the "Why of Radio," by Kenneth G. Ormiston.
4. A Suggestion Box, whereby fans can send in their complaints or complimentary remarks about certain programs or artists.

These are just a few of the many helpful suggestions contained in Mr Banning's letter. We will be glad to show this prize-winning letter to anyone who is interested enough to come to our office.

We want to thank all our readers for their suggestions, and especially do we feel grateful for those who competed in the Prize Contest.

A \$67.50 Pemco heavy duty 135 volt A & B Master Power Unit was the prize won by Mr. Banning.

The Ultimate---



"B"

BATTERIES

"Peer of Them All"

Designed especially to meet local climatic conditions, insuring longer life and freedom from blistering. Now available on the Pacific Coast.

HIGHER QUALITY LOWER PRICE

You'll Find Real Satisfaction If
You Insist On Genuine

BLUE DIAMOND

Guaranteed Batteries

At Most Good Dealers

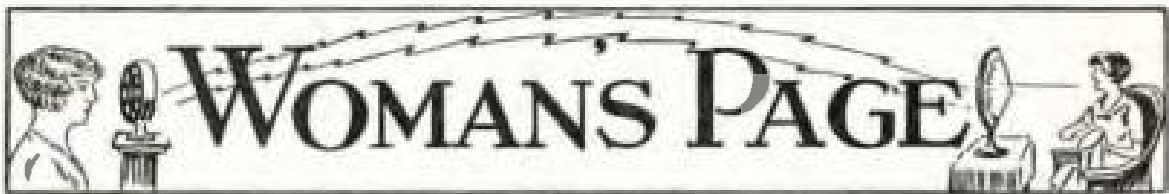
Blue Diamond Battery Co.

Los Angeles Factory Branch

581 Chamber of Commerce Bldg.

Phone WEstmore 3877, Los Angeles

*If Your Dealer Cannot Supply You—Send
Us His Name*



By CAREY PRESTON RITTMEISTER



"C. P. R."

A radio station operated for "good-will" necessarily brings great numbers of people daily, either from curiosity, to express appreciation, or, once in a while, to voice disapproval of something heard.

All day long, from nine in the morning until ten or eleven at night, this goes on.

One day a stout, motherly middle-aged woman ascended the steps leading into the reception room of KHJ, her arms laden with bundles, for she had been shopping, and from a certain belligerency in her air, it was evident she had some grievance she wished to voice.

"Ees Onkle John here?" she asked.

When told that Uncle John had not yet come in, she seated herself, saying, in response to our inquiry, "You can do not'ing; shust Onkle John."

But, after waiting an hour, she became restless, so again we asked if we could help her. She stood up, her face became very red, and she said:

"Jane Novak—she say on radio she Scandinavian. She not Scandinavian! Jane Novak Czecho Slovak! She come from my town in Czecho Slovakia! Jane Novak mottier my neighbor in Czecho Slovakia. Shame! Jane Novak say she Scandinavian. She 'shamed her country! Onkle John must tell radio Jane Novak Czecho Slovak. You tell him!"

Becoming more and more incensed as she talked, her voice on an ascending scale, the emotion for which this race is noted displayed in every line of her

face and motion of hands and body she could not be quieted; telling her that there must be some mistake and that we would let Uncle John know about it, had no effect on her anger. But home duties fortunately called her and she left, shaking her head and muttering, "Jane Novak 'shamed her country! She Czecho Slovak!"

The end of this story developed some two years later, but I'll tell it to you next week.

Hungarian Goulash

All this about Czecho Slovakia brings to my mind a famous dish—one it would be well to include in your menu occasionally. This is the way my old Bavarian friend in Weehawken made Hungarian Goulash.

Buy 2 lbs. of the bottom round of beef. Get a piece of suet, cut it in small pieces and try it out, then add a small piece of butter. Fry 1 quart of small onions, slowly; when light brown, add the beef cut in dice, a glass of water, salt, pepper, 1 tomato, 1 green pepper minced. Cook 2 hours on top of the stove, taking care not to burn. Stir frequently. Before serving add a little paprika and serve with dumplings, made in this manner: To a pint or more of hot mashed potatoes add 2 tablespoons of flour, working it in as fast as possible. Have ready a dish of grated bread crumbs browned in butter. Dip serving spoon in the crumbs, then take up the potatoes with the spoon. They are delicious and look very tasty and appetizing.

KGO says this article is too short, so I have told him to add anything he thinks of to the Goulash—to pep it up a bit. He suggests Tobasco Sauce!

Picked Out of the Air

By HEARL LA VERN CROWTHERS

If you fear a thing, it is attracted to you.

The short road to lasting fame has not yet been completed.

A vacuum cleaner draws in the dirt. Don't be a vacuum cleaner.

Experience can teach us much. If we refuse to learn by experience, the road which we must eventually retrace will be wet with our own tears.

The Scotchman who looks over the top of his specs to keep from wearing them out, reminds me of the fellow who will drive forty miles to save a cent on a gallon of gas.

Many a man has found that the ring he thought he had placed on the third finger of her left hand had, in reality, been inserted through the end of his own nose.

A boomerang travels in a circle, a thought in a direct line. If the thought which we have sent out is good, it will return to strengthen and soothe, if not, it will undoubtedly clip us on the ear.

You can only cram so much food into the mouth at one time, likewise into the intelligence. Chew your thoughts well. If they are distasteful, spit them out. After a while you will become a connoisseur of good thoughts—and food for thought as well.

The Sensation of the Season

McKinley Junior "B" Eliminator



\$9.75

Complete

**Absolutely No Hum
No Tubes to Blow Out
No Acid**

**GUARANTEED FOR ONE
YEAR**

Other McKinley "B" Power Units,
\$20 to \$35

Also our 150 Volt "B" Eliminator
for Power Tube, \$18.75

**GIVE YOUR SET A TREAT
A Constant, Steady 'B' Supply**

Send Check or Money Order for
\$1.00 and We Will Ship C. O. D.

YORK 1828

Or Call

McKinley Radio Mfg. Co.

10908 S. Main St.

Los Angeles

Also sold by

GOODWORK CABINET RADIO SHOP
6715 Avalon Blvd. Los Angeles



A "20" AT LONG BEACH

DX Club:

Dear Sir:

A short time ago I wrote you and gave you a list of stations I had received. Since then I have increased my log and changed my set to a Radiola 20. I have an aerial now, and I'm all rigged up in fine style. Here's my list: KYA, KPO, CFRC, KGO, KLX, KFWM, KZM, KTAB, KFWH, KFWI, KQW, KFBK, KOIN, KGW, KEX, KOMO, KHQ, KFOA, KGA, KXL, KOWW, KWSC, KJR, KFJR, CNRV, CHYC, CFVC, CFAC, CFCN, KFAU, KPPY, KMOX, WLIB, KDKA, WJAZ, WLS, WCX, WOAI, CYJ, KFQB, WCCO, KFXF, KOA, KFVR, WLW, WQJ, WBAP, WOW, WHO, KYW, JOAK, WJAX, WKAQ, 5CL, KSL, WMCA, WGES, WEBB, KFNF, KGCB, KFKX, KOB. Also all the locals.

I'd like to hear from some of the Radiola 20 hounds about their sets, if possible.

Yours truly,

WM. C. BAXTER,
Long Beach, Calif.

ON THE REDWOOD HIGHWAY

DX Club:

Being a constant reader of the little Red Book I have followed with much interest the letters from other Knob Twisters. I believe that my log is one that any ordinary DXer would be proud of. I am.

I own a Super-Zenith and have no power tube or other accessory attachments. To date I have logged 193 stations. These include four Australian—namely, 2BL, 3LO, 4QG and 5CL. Have just recently received two verification letters from 2BL, Sydney. Besides these, I have heard and written for verification Japanese stations JOAK, JOBK and JOCK. Have 18 Chicago stations, three in Mexico, four in Canada, etc. I use blue vitrol ground and Gosilco antenna. I get 2BL as late as 6 a. m.

FRED S. HAMILTON,

Willits, California.

CLAREMONT JOINS THE CLUB

DX Club:

I haven't been bitten by the bug hard enough to get me up at 3 a. m. yet, but I suppose I will if I log a few more good stations. I have had a Radiola 20 for five weeks, with no frills attached, and here's my DX log for that time, mostly loud speaker though not all: CNRV, AMB, PWX, CZE, KDKA, KFJY, KOMO, KJR, KOWW, KOB, KWSC, KEX, KGW, KOIN, KOA, KSL, KLW, KFKX, WLS, WCCO, WGH, WOW, WHO, WOC, WJAZ, KMOX, KFPX and all California locals. Will be glad to give Eastern dialings to any "20" owners.

J. E. POWELL,

Webb School, Claremont, Calif.

JOAK REBROADCAST

San Francisco, Cal.,
March 16, 1927.

Editor, Radio Doings:

You have probably seen the news dispatches advising of the rebroadcasting by KFRC of Station JOAK at Tokyo, Japan, between 4 and 5 o'clock this morning.

After making a five-day study of the receptive possibilities of this station at one of our remote-control pick-ups in San Francisco we "put it on the air" this morning at 4 a. m., and the consensus of opinion of newspapermen whom we had listening in, the broadcast of JOAK by KFRC was "successful."

To our knowledge this is the first successful attempt to rebroadcast Japan; in fact, we know of no attempts ever having been made. The distance from San Francisco is over 6000 miles. They were received on a wave near 370 meters and rebroadcast by us on 268, receiving being done on a Gillilan 40 receiver. The volume was excellent and the speaking very clear and distinguishable.

HARRISON HOLLIWAY,
Manager, KFRC.

Koo-Koo KolyuM

By HAL DAVIS

"CHILI REDS ORDERED DEPORT. ED."—*Newspaper heading. Why pick on poor harmless beans?*

Scientists have recently discovered that a shoe-horn is the only instrument that will produce a foot note.

Collech Stude: "I was hungry as beck this morning, and went into the kitchen to look for something to eat. 'Toss me a biscuit,' says I to the cook. 'I can't,' says he, 'It's just out of my range.'"

We wondered why the guy putting up shades in our office the other day acted so sleepy, till we found out he was also in the (y)awning business.

Ethelbert: "Why is a man traveling to Northern Africa like an expensive book?"

Oswald: "I give up. Why?"

Ethelbert: "'Cause he's Morocco bound."

(Having to take dinner the other evening or so in company with Friend K. G. O. ("The Answer Man"), we were both intently studying the menu card. The first item was, "Chicken Noodle Soup."

"Shall we try it, Koo-Koo?" queried Ormie.

"Nay, not so!" sez we.

"And forsooth, why not?" quoth K. G. O.

"Because," sez we with due solemnity, "It must be very thin. Long experience on a chicken ranch has taught us that there is next to nothing in a chicken's noodle."

Each week this department will award a prize for the dumbest remark brought to our attention. This week the Iron Cross with Golden Palms for Outstanding and Exceptional Dumbness goes to the benny we met on South Spring street, who said:

"Pardon me, but I'm a stranger here. Could you direct me to a nice, reasonable Post Office?"

CeCo Radio Tubes Announcement

The Latest Addition
to the "CeCo" Family

Type K Special Radio Frequency Tube

RATING

Fil. Volts

5.0

Fil. Amps.

.25

Plate V.

67-140



List
Price
\$3.00

When used in the RADIO FREQUENCY Stages of the average receiver Type "K" will increase volume, while improving the tone with superior sensitivity tending to improve distant reception.

This tube is NOT recommended for NEUTRODYNES, unless a competent radio man is available to reset the neutralizing controls. Most all factory made receivers will be considerably "Pepped Up" by its use.

CeCo Tubes make a Good Receiver Better

Manufactured by

C. E. MFG. CO., INC.
PROVIDENCE, R. I.

Pacific Coast Representatives

B. KRUGER & CO.

500 North Huntley Drive
West Hollywood, Calif.
Sherman P. O. Tel. OX. 3887

THE TROUBLE SHOOTER



ASK K.G.O.
The Answer Man

KENNETH G. ORMISTON
Technical Editor



Information has been requested concerning the new Type K CoCo Radio Frequency tube.

This tube has been designed to function as an RF amplifier. It operates on a filament voltage of 5, and current of .25 amperes. The plate impedance at 40 volts is 7500 ohms. The amplification constant is 5, and the grid-to-plate capacity about .0000023 microfarad. In operation the tube permits of an increased feed-back or regeneration before going into oscillation, is quiet, and exerts a minimum damping effect upon the tuned circuit preceding it, thereby helping selectivity.

Fans ask why cone speakers generally do not perform with the same quality on sets using an ordinary 201-A type tube as they do when a power tube is used in the last audio stage.

For best results, particularly with quality of reproduction in mind, the impedance of the loud speaker windings should equal the plate or output impedance of the last audio tube. The impedance of the speaker windings varies with the frequency to a larger degree than does the impedance of the tube, and loud speaker manufacturers (cone type) have found that a comparatively low impedance will render the best quality of the entire audio range, doing full justice to the heretofore neglected low notes.

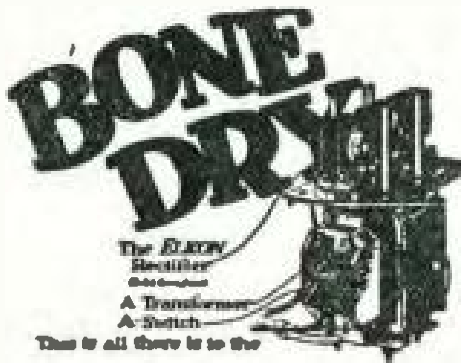
It follows that cone speakers are therefore best adapted for use with an output tube of low impedance. And

since the power tubes have this property, we find that the quality is very much better when a cone is fed by a power tube, even though a small volume is desired.

Where it is desired to operate a cone speaker on an amplifier not equipped with a power tube, a coupling transformer which has a 1 to 1 ratio with windings designed to balance the unequal impedances of speaker and tube can be used to give quality.

For the benefit of our readers who do not understand what is meant by the term "impedance," we might explain that it is the term used in alternating current circuits which corresponds to the term "resistance" in direct current work. It might, therefore, be called "alternating current resistance." It is the resistance offered internally by the tube to the passage of an alternating current. It varies with the frequency. This alternating current resistance, the voltage amplification factor, and the mutual conductance are the three important characteristics of the tube. The last named (mutual conductance) is the ratio between changes of plate current with the voltages applied to the grid. All three factors can be measured in the laboratory, or any one can be calculated mathematically when the other two are known.

When it is desired to operate a cone speaker on the output of a 201-A type tube, a device called an "audio filter," made by Stromberg-Carlson, is very helpful.



ELKON

NEW 3 AMPERE HEAVY DUTY CHARGER

All of the main features of the Elkon Trickle Charger, but—the new device charges at 3 ampere rate, tapering automatically as the battery becomes fully charged.

No acids, alkali, water, moving parts, tubes or interference.

**CONSTANT POWER
CONSTANTLY**

\$18⁵⁰

Complete

Wholesale Distributors

**YALE RADIO
ELECTRIC CO.**

LOS ANGELES

1111 Wall Street WEstmore 3351

STROMBERG CARLSON



at

The Radio-Art Studio

*"A Perfect Setting for
A Perfect Set"*



Authorized Dealer

Stromberg-Carlson

3831 Wilshire Blvd.

Between Western and Manhattan

Phone WASHINGTON 4095

Open Evenings Until Nine

SUNDAY TIME TABLE

ALL TIME TABLES ADJUSTED TO PACIFIC TIME
(X) Indicates Station is On the Air

10-12 A.M.		12-2 P.M.		2-4 P.M.		4-6 P.M.		STATIONS				6-8 P.M.		8-10 P.M.		10-12 P.M.															
10 00-10 30	10 30-11 00	11 00-11 30	11 30-12 00	12 00-12 30	12 30-1 00	1 00-1 30	1 30-2 00	2 00-2 30	2 30-3 00	3 00-3 30	3 30-4 00	4 00-4 30	4 30-5 00	5 00-5 30	5 30-6 00	CALL	Wave Length Meters	Power In Watts	STATION	6 00-6 30	6 30-7 00	7 00-7 30	7 30-8 00	8 00-8 30	8 30-9 00	9 00-9 30	9 30-10 00	10 00-10 30	10 30-11 00	11 00-11 30	11 30-12 00
SOUTHERN CALIFORNIA																															
							X	X	X	X							KELW	560	250	Burbank											
	X	X											X	X		X	KGEF	517	1000	Los Angeles			X	X	X	X	X				
X	X	X	X						X	X							KFI	467	4000	Los Angeles	X	X	X	X	X	X	X	X	X	X	
			X	X													KFCR	413	50	Santa Barbara					X	X					
X	X	X	X	X													KHI	405	500	Los Angeles			X	X	X	X	X	X			
		X	X														KMIC	387	800	Inglewood			X	X	X	X					
																	KFBC	380	50	San Diego			X								
									X	X	X	X	X	X			KMTR	370	500	Hollywood	X	X	X	X	X	X	X				
X	X	X	X					X	X	X	X	X	X				KNX	337	750	Los Angeles			X	X	X	X	X				
	X	X															KPSN	316	1000	Pasadena	X	X									
X	X	X	X									X	X				KFWC	295	200	San Bernardino						X	X	X	X	X	
X	X	X	X						X	X							KTBI	294	750	Los Angeles	X	X	X	X	X	X	X				
X	X	X	X						X	X	X	X					KFSG	275	500	Los Angeles	X	X	X	X	X	X	X	X			
								X	X								KWTC	263	250	Santa Ana	X	X									
X							X	X									KFWB	252	500	Hollywood					X	X	X	X	X		
							X	X									KFSD	248	1000	San Diego					X	X	X	X	X		
X	X	X					X			X	X	X	X	X	X	X	KNRC	238	1000	Santa Monica	X	X	X	X	X	X	X	X	X	X	
X	X	X				X	X	X	X	X	X	X	X	X	X	X	KFON	233	750	Long Beach	X	X	X	X	X	X	X	X	X	X	
X	X	X	X														KPPG	220	50	Pasadena	X	X	X	X							
																	KFQZ	228	500	Hollywood				X	X	X	X	X	X		
				X	X								X	X			KFWO	211	250	Catalina	X	X	X	X	X	X	X	X			
X																	KFVD	205	500	Venice	X	X	X	X	X	X	X	X	X	X	
NORTHERN CALIFORNIA																															
X	X						X	X	X	X							KPO	425	1000	San Francisco	X	X	X	X	X	X	X	X	X	X	
	X	X		X	X												KYA	400	1000	San Francisco			X	X	X						
	X	X	X				X	X		X							KGO	361	4000	Oakland	X	X	X	X	X	X	X				
X	X	X	X	X													KQW	323	500	San Jose			X	X	X	X					
X	X	X	X	X													KTAB	303	1000	Oakland			X	X	X						
												X	X				KFRC	288	500	San Francisco	X	X	X	X	X						
	X	X															KFUS	288	50	Oakland			X	X	X						
X	X																KRE	288	100	Berkeley											
							X	X	X								KFWI	250	800	San Francisco	X	X	X	X	X	X	X				
NORTHERN AND WESTERN STATES																															
X	X	X	X						X	X	X	X	X	X	X	X	KGW	481	1000	Portland			X	X	X	X	X				
									X	X	X	X	X	X	X	X	KEX	447	5000	Portland	X	X	X	X	X	X	X	X	X	X	
X	X	X															CFAC	435	2000	Calgary											
	X	X															KJR	384	20M	Seattle			X	X	X	X	X	X			
X	X	X	X									X	X	X	X	X	KLZ	384	500	Denver	X	X	X	X							
												X	X	X	X	X	KOA	322	5000	Denver	X	X	X								
																	KOIN	319	1000	Portland	X	X	X	X	X	X	X				
X	X	X	X	X	X	X											KOMO	308	1000	Seattle	X	X	X	X	X	X	X	X			
X	X						X	X									KSL	300	1000	Salt Lake City	X	X	X	X							
X	X	X															KMD	250	500	Tacoma	X	X									

Hours Shown as Submitted by These Stations. For DX Schedule See Page 56

COUNTERPHASE for DX: H. A. Everest, 1032 N. Ogden Dr. GR. 9915

WILL SACRIFICE a \$150 a month, well-appointed, two-room office suite in the I. N. Van Nuys Building, Seventh and Spring Streets, Los Angeles, for \$100 per month. Lease has one year to run

Inquire at

RADIO DOINGS

407 East Pico St.

Westmore 1401

Los Angeles, Calif.

B and C LIGHT-SOCKET POWER

WITH

RAYTHEON RECTIFIER and WEBSTER "DUO-CHOKE" FILTER

Gets amazing results out of H. F. L. 11 (8 standard, 2-112 and 1-171 tubes) and other high power sets other units won't handle. You can easily control and permanently set the "B" and "C" current to all tubes in receiver at the exact value needed for best tone quality, greatest distance, and most volume.



Size 5 1/4" high, 6 1/2" wide, 11 1/2" long
No Ground Needed On Loop Set

Costs less to operate than a 10-watt lamp. Little Giant B-C—3 "B" controls up to 180 V. and two "C" controls 0 to 45 V.....\$50.00

Webster Super-B—3 "B" controls up to 180 V. Price with Raytheon Tube.....\$39.00

Webster Economy-B—2 "B" controls and a power tube tap 135-180 V. Price with Raytheon Tube.....\$35.00

Webster Popular-B — open type otherwise same as Economy "B".....\$32.50

THE WEBSTER Is Dependable

If Your Dealer Can't Supply You Telephone VAndyke 3297

Or Write

SCOTT SALES COMPANY

443 S. San Pedro St.

Los Angeles, Calif.

Send for Free Booklet "Improving Your Radio"

THE WEBSTER COMPANY

854 Blackhawk Street. — Chicago, Ill.

“A” and “B” POWER For Your Radio Set



WILLARD "A" POWER UNIT



WILLARD "B" POWER UNIT

Each of these units represents the best in engineering in the Power Unit field. Workmanship and materials are of the highest quality. No hum or distortion from them. They connect with the house lighting circuit.

Ask about our Time Payment Plan. Why not buy them now?

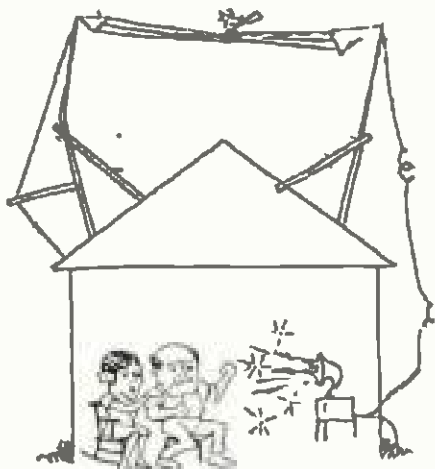
Willard Service Stations

OF SOUTHERN CALIFORNIA

OR

YOUR NEAREST RADIO DEALER

Anten-A-Liminator



The result of months of experimenting and exhaustive tests. Many times the selectivity of an outside aerial. Will make it possible for you to separate the lower wave length stations.

Small—Compact. Can be put inside or outside of the cabinet. Quickly installed.

Will take the Chaos out of the Air.

Static, extraneous noises, many stations coming in at one time, unsightliness and a fire hazard are some of the disadvantages of an outside aerial.

Why get a jumble of noise from an instrument designed for pleasure?



\$8.50

See Absolute Guarantee with Every Instrument

Manufactured by:
Geo. E. Browning Co.
Ogden, Utah

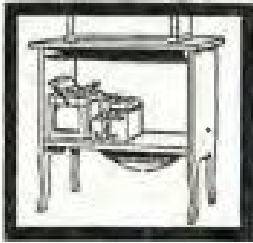
If Your Dealer Can Not Supply You

Telephone VAndike 3297
Or Write

Scott Sales Co.

443rd S. San Pedro St.
Los Angeles, Cal.





Rear view above shows large compartment with ample space for batteries, battery charger, or battery eliminator, which are entirely concealed from view. Back is open for ventilation of batteries.



(Pat. Applied For)

Model 200, with 22-inch Cone Loudspeaker



Above is shown the Cone Loudspeaker, with its Panel, which is quickly and easily removable, allowing access to all batteries, battery charger, battery eliminator or other equipment and wiring.

Model 200

\$35

Console with Cone Loudspeaker Ready for Set and Batteries

This Windsor Cone Loudspeaker Console is equipped with a 22-inch Windsor Cone Loudspeaker. Its top is 30 in. x 17 in. and is 29 in. high. The battery shelf provides ample space for batteries, charger, battery eliminator and other equipment. Beautifully finished in either Mahogany or Walnut color.

A Revelation in Radio Reproduction



Model 210 22-inch Cone Loudspeaker with Panel and easel back

\$18⁰⁰

(Pat. applied for)

beauty, just as it entered the microphone.

• • •

This 22-inch Windsor Cone Loudspeaker will reproduce the softest crooning lullaby in a softly lighted room, or the full throated march music of a band in an auditorium—both with perfect fidelity of sound and tone. The Windsor Cone Loudspeaker Console is the greatest value in the world of radio. When compared with the average cost of cone-type loudspeakers of even similar size, the cost of the complete Windsor—cone loudspeaker and console—its amazingly low.

• • •

The Windsor Cone and Horn Loudspeakers, combined with attractive pieces of furniture in many models, are being demonstrated by recognized dealers everywhere. Go to your dealer today and examine this astonishing new Cone Loudspeaker Console. If he happens not to have one, write to us and we will tell you the name of the nearest store at which you can see and hear one.

• • •

NOTE TO DEALERS

Write or wire today for details of the highly profitable Windsor selling line.

At last—a cone loudspeaker that reproduces all the tones as they are broadcast. From the deep voiced tuba of an orchestra to the softest note of a vocal solo—every tone—every sound is reproduced in all its

As a piece of furniture, the Windsor Cone Loudspeaker Console is of such manifest high quality and attractive design as to be a welcome addition to any home. Finished in Mahogany or Walnut color.

WINDSOR FURNITURE CO.

World's Largest Manufacturers and Originators of Loudspeaker Consoles

1420 Carroll Avenue, Chicago, Illinois

Los Angeles Branch: 917 Maple Avenue

R. D. 23

WINDSOR FURNITURE COMPANY
 Electrical Department,
 917 Maple Ave., Los Angeles.

Send me **FREE** and without obligation circulars of the Windsor line of Cone and Horn Loudspeakers combined with prices of furniture, and name of nearest dealer.

Name.....
 Address.....
 Dealer's Name.....
 City.....State.....

MORE DISTANCE

Greater Selectivity
Increased Volume
With the

"DX"

LONG DISTANCE GROUND



No matter what make of Radio you have, or where you are located, you cannot afford to be without this latest Radio Improvement.

PRICE

\$8.00 Complete Postpaid Anywhere

Shipment Made Same Day Order Is Received

ORDER NOW

DEXTER SUPPLY Co.

487 Chamber of Commerce Bldg.
• 1151 South Broadway

Westmore 9137 Los Angeles

Note: Snappy Service to Dealers



Right here!

You can't go wrong when you use Polymet High Voltage Condensers in sets or power units, to withstand 1,000 volts permanently, and rigidly tested for this rating. Incorporate impregnating compounds. Individual units or in blocks; cans or unmounted; fixed or flexible leads.



Capacities .1 to 5. Mfd. 60c to \$4.50

RAYTHEON CIRCUIT BLOCKS

Tested by the Raytheon Laboratories, they have passed with highest honors and been given an unrivaled rating:

F1001—1-C-1 Mfd. \$2.00

F1000—14 Mfd. 9.50

At all good dealers everywhere.

Illustrated descriptions sent FREE on request

Polymet Manufacturing Corporation
599F Broadway New York City

Pacific Coast Representatives
THE SPECTOR COMPANY
Rialto Building, San Francisco, Cal.
"World's Largest Manufacturer of Radio
Essentials"

POLYMET

Schedule of DX Stations

Call Letters	Location	W. L. Meters	Power Watts	Schedule of Concert and Dance Music						
				Sun.	Mon.	Tue.	Wed.	Thu.	Fri.	Sat.
WBBM	Chicago	226	1500	6-10	S.	6-10	6-10	6-10	6-7	6-10
WIBO	Chicago	226	1000		4-5				10-12	
WOWO	Ft. Wayne, Ind.	227	1000		5-9		5-9	5-9		
WHT	Chicago	238-400	3500		S.	8-10	8-10	8-10	8-10	8-10
WWAE	Plainfield, Ill.	242	5000	S.	6-9	6-9	6-9	6-9	6-9	6-9
WOOD	Grand Rapids, Mich.	242	1000						8-10	8-10
WBAL	Baltimore, Md.	246	1000	5-6	5-9	5-9	S.	5-9	5-9	S.
WRVA	Richmond, Va.	256	1000		6-8		6-8	6-8	6-8	
WKAF	Milwaukee	261	5000		6-8		6-8	6-8	6-8	
WCAR	San Antonio, Tex.	263	6000		8-9		8-9		8-10	
WENR	Chicago	266	1000		6-8	6-8	6-8	6-8	6-8	6-8
WGHP	Detroit	270	1500		S.	5-6	5-6	5-6	5-7	5-6
KGU	Honolulu	270	500	4-6	5-7	5-7	5-7	6-9	6-9	S.
WHK	Cleveland	273	1000	9-11	9-11	11-12		9-11	9-11	9-11
KFAL	Boise, Idaho	280	750	5-7	S.	5-8	5-7	5-8	5-6	5-8
KMOX	St. Louis	280	5000			7-9		7-9		
WSM	Nashville, Tenn.	282	1000	4-11	4-11	4-11	4-11	S.	4-11	4-11
WMBF	Miami, Fla.	284	5000		8-10		8-10			8-10
WPG	Atlantic City	300	5000	8-10	5-9	5-9	5-10	5-9	S.	5-10
WGN	Chicago	303	1000	6-8	5-9	5-9	S.	5-9	5-9	5-9
WLIB	Chicago	303	4000	6-8	8-9	6-9	6-9	6-9	6-9	6-9
KOIL	Council Bluffs	308	500			6-9	6-9	6-9	6-9	6-9
KDKA	Pittsburg	309	1000		5-11	8-10	8-10	8-10	8-10	8-10
WABC	New York	316	5000	S.	6-9	S.	6-9	S.	S.	9-11
WJAZ	Chicago	330	1500	5-7		6-10	5-9	5-7	5-7	5-7
WBZ	Springfield, Mass.	333	2000			6-9	6-9	6-9	6-9	6-10
KFAB	Lincoln, Neb.	341	1000	4-7	5-8	5-9	5-9	5-9	5-9	5-9
WLS	Chicago	345	5000			6-9		6-9		
WWJ	Detroit	353	1000	6-9		6-9	6-9	6-9	6-9	6-9
WDAF	Kansas City	366	1000	4-7	6-7	5-7	5-8	5-8	5-8	5-8
WJJD	Mooseheart, Ill.	370	1000	S.	6-11	6-11	6-11	6-11	6-11	8-11
KFBU	Laramie, Wyo.	375	500			6-11	6-11	6-11	6-11	6-11
KTHS	Hot Springs, Ark.	375	1000		8-10		8-10		8-10	
WGY	Schenectady, N. Y.	380	5000	7-10	7-10	7-10	7-9	7-9	7-10	7-9
WEAR	Cleveland	389	1000	6-7	S.	6-9	5-9	5-9	5-9	5-9
WTAM	Cleveland	389	1000	5-9	5-6	5-9	6-10	5-9	5-9	6-10
WOAI	San Antonio, Tex.	394	5000	5-7	S.	6-8	6-8	6-8	6-8	S.
PWX	Havana, Cuba	400	1000	5-7	5-9	5-8	5-8	5-8	5-8	5-7
CYJ	Mexico City	410	1000	5-7		5-8		5-8	5-8	
KFQB	Ft. Worth, Tex.	412	2500		6-10	6-10		6-10	6-10	6-10
WCCO	St. Paul, Minn.	416	5000		5-8	5-8	5-8	5-8		5-8
KFXF	Denver	422	500	S.	5-11	5-11	5-11	S.	5-11	5-11
WLW	Cincinnati	422	5000	4-5	4-7	4-7	4-9	4-10	S.	4-7
WSB	Atlanta, Ga.	428	1000	4-6	5-9	5-9	5-9	5-9	5-9	5-9
WQJ	Chicago	447	500	5-7	S.	7-11	7-11	7-11	7-11	7-12
WMAQ	Chicago	448	1000	S.	4-5	4-8	4-8	4-8	4-9	4-9
WJZ	New York, N. Y.	454	50000	4-8	5-9	5-9	5-9	5-9	5-9	6-9
WBAP	Ft. Worth, Tex.	476	1500	7-9	7-10	7-9	S.	7-10	7-10	7-10
CYL	Mexico City	480	1000		7-9	7-9	7-10	7-9	7-9	7-10
WOC	Davenport, Iowa	484	5000	4-9	S.	5-9	5-9	5-9	5-9	5-8
WEAF	New York City	491	5000		5-9	5-9	5-9	5-9	5-9	5-9
WJR	Detroit	517	5000	7-8	S.	5-7	7-9	6-7	S.	8-9
WOW	Omaha	526	1000	7-9	7-9	7-9	S.	7-9	7-9	7-9
WNYC	New York City	526	1000		5-8	5-8	5-8	5-8	5-8	5-8
WHO	Des Moines	526	5000	6-8	5-10	5-10	5-10	5-10	5-10	S.
KYW	Chicago	536	3500	6-9	4-5	6-10	6-10	6-10	6-10	6-10
KSD	St. Louis	545	500	5-7	6-8	5-7		5-7	5-8	5-8

Hours Shown as Submitted by These Stations Adjusted to Pacific Standard Time

CROSLEY SPECIALISTS HAVE YOUR CROSLEY BALANCED
CHILDS' LAB., 1187 W. 24th St., L. A.

The Burns B-Power Unit

Not
Just Another Eliminator
BUT

A Real Eliminator

No
Hum
No
Acid

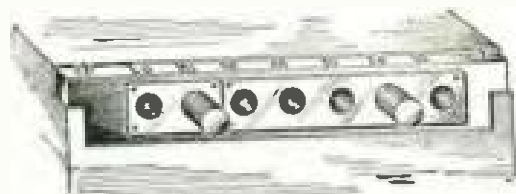


Price
Complete
with Tube
\$47⁵⁰

*(West of the
Rockies)*

Burns B-Power Unit

Will Handle Perfectly Up to Twelve Tubes, Including Power Tube



Amplifier Voltage Adjustment
Plug which makes the Burns
Eliminator the only one on the
market which gives a constant
voltage at a fixed load.

A Source of Unfailing Plate Voltage

Stock for the Jobber Carried by

HENGER-SELTZER CO.

1111 1/2 Wall Street,
Los Angeles
Phone WEstmore 5258

377 Brannan Street
San Francisco
Phone Sutter 3461

Buy Your Pemco Today

Because you will never know real consistent Radio satisfaction until you use a Pemco automatic socket power.

No matter what kind of electric light current you have (50 or 60 cycle) or what kind of a Radio, a Pemco will give you full satisfaction.

Your dealer will install a Pemco free of charge. He will arrange the easiest of terms. He stands ready to render every service. See one of these dealers today.

Sherman, Clay & Co.
948 Santee St., Los Angeles

Distributors

The Electric Corp.
1050 Santee St., Los Angeles

Pacific Wholesale Radio, Inc.

Pemco



Automatic
"A" and "B"
Power Unit

"PEMCO" DEALERS

- Los Angeles**
AMERICAN ELECTRIC
2428 So. Vermont
Broadway Dept. Store
Fourth and Broadway
CLARK RADIO
9114 S. Vermont
DAVIS RADIO STORE
2817 So. Main St.
DELWOOD BROS.
6120 S. Broadway
L. A. DURCAN
259 W. Pico
ELEC. LIGHTING SUPPLY Co.
216 W. 3rd St.
HEATH ELEC. Co.
1053 N. Western Ave.
HOME RADIO
1732 E. Florence
KELLER MUSIC Co.
122 S. Vermont
L. A. MUSIC Co.
4410 So. Broadway
MONARCH RADIO
2189 W. Washington
PARMELEE DEPT. STORE
436 So. Broadway
POTTER RADIO SHOP
5408 W. Western
J. C. REKNER, INC.
625 So. Main
RICHARDSON, INC.
730 W. 7th St.
W. H. SHEPARD
4402 Avalon
So. CALIF. RADIO Co.
2135 W. Pico
STARBUCK RADIO Co.
417 W. Pico St.
TRIANGLE RADIO
587 S. Sycamore
UNIVERSITY RADIO
658 N. Rossmore
VERMONT CYCLES RADIO
2319 S. Vermont Ave.
VERMONT MUSIC Co.
824 So. Vermont Ave.
H. W. WILSON
1323 Venice Blvd
- Alhambra**
ALHAMBRA MUSIC Co.
RADIO MUSIC Co.
276 W. Main St.
- Anaheim**
E. R. CAVELLY
DUNHAM & KATZ
Armons
GUY R. CONRAD
- Beverly Hills**
REVERLY CYCLE & NOVELTY
WORKS
422 Canon Dr.
- Burbank**
COLLINS RADIO SHOP
523 E. SAN FERNANDO Blvd.
- Brea**
BENNETT RADIO STORE
Holliston
S. E. MOORE
BELLFLOWER ELECTRIC
- Compton**
FOUR SQUARE RADIO
MODEL ELEC. Co.
Calver City
CULVER CITY RADIO Co.
- Downey**
H. P. MEYERS HARDWARE
Co.
DANIELLE ELECTRIC SHOP
119 N. Crawford
- Fullerton**
RADIO STUDIO
112 1/2 N. Spadra Ave.
- Fillmore**
H. E. WILLIAM MUSIC SHOP
- Glendale**
HUGHES & SONS
142 N. Brand Blvd.
SMITH ELEC. Co.
- Hermosa**
MUELLER DEPT. STORE
- Hollywood**
GLOW ELEC. Co.
5910 Hollywood Blvd.
HETZEL RADIO Co.
8303 Santa Monica Blvd.
HOLY ANGELS MUSIC Co.
5611 N. Hollywood Blvd.
HOLLYWOOD RADIO Co.
709 N. Western Ave.
F. C. MCCOWELL
1241 Vine St.
- Huntington Park**
P. A. DOUGHERTY
- Inglewood**
PARBEE ELEC. Co.
- Lankershim**
LANKERSHIM MUSIC Co.
- Long Beach**
JENSEN RADIO Co.
107 American Ave.
KELM RADIO
213 1/2 E. Fourth St.
MCCLERY MUSIC STORE
RIALTO RADIO Co.
- La Jolla**
G. G. WILLIAMS
- Lompoc**
PENDLEY BROS.
129 S. H St.
- Norwalk**
NORWALK ELECTRIC Co.
ORTMAN & MELVILLE
- Monterey Park**
RADIO RADIO SHOP
313 W. Garvey St.
- Montebello**
WHITE AUTO ELEC. Co.
- Ocean Park**
MARINE RADIO Co.
PIER AVE. RADIO Co.
- Orange**
COHEN'S RADIO SHOP
100 W. CHURCH AVE.
DEE LARSEN MUSIC Co.
- Ontario**
FOOD BROS.
Oxnard
H. C. MURPHY
137 Fifth St.
NEWCOMB RADIO Co.
- Pasadena**
DEWILDE RADIO LAB.
FARRERA MUSIC SHOP
PREMIER RADIO CORP.
11 E. California St.
SERVIC RADIO SHOP
WILLARD MUSIC Co.
180 East Colorado St.
- South Pasadena**
RADIO ELECTRIC
1165 Fair Oaks
So. PASADENA ELEC. Co.
- Puente**
H. P. GECREKES
- Redondo**
J. H. THORPE
A. H. COSTLEY
- Riverdale**
RIVERSIDE MUSIC Co.
- San Bernardino**
O. HORSER
247 14th St.
MCDONALD & PASTOR
San Diego
FRANK'S MUSIC SHOP
520 Fifth St.
So. CALIF. MUSIC Co.
720-22 Broadway
TREBALLS MUSIC Co.
UNITED RADIO ELECTRIC
2807 University Ave.
- San Pedro**
SAN PEDRO ELEC. Co.
G. M. CHIVICILLA
- Santa Ana**
ROBERT S. CRAWFORD
312 N. Broadway
- Santa Barbara**
BLAKE MOTOR CAR Co.
BOLTON & JONES
419 State St.
J. E. WILEY
9 W. ANSHAM St.
- Tempe**
TEMPLE AUTO ELECTRIC
- Upland**
ROY CRESGIBTON
305 Second Ave.
- Ventura**
PRIOR RADIO SHOPPE
1032 Main St.
VENTURA AUTO ELEC. Co.
- Venice**
STEWART-WARNER RADIO
STUDIO.
- Whittier**
H. C. OLDHAM
- Wilmington**
R. W. ZIPP

K M T R

370 METERS

Every Monday Evening,
9:00 to 10:00

Japan and Australia on a \$5.50 Stewart-Warner Set!

C. H. Preston, inventor of the "DX" Ground that is the foremost topic of conversation in radio circles on the Pacific Coast, has used a \$52.50 model 325 Stewart-Warner receiving set in all his distance tests. With this five tube Stewart-Warner set, in which is incorporated the famous U. S. Navy receiving circuit, he is hearing Nagoya, Tokio, Melbourne and distant stations in the United States and Canada EVERY NIGHT. The Stewart-Warner radio is a REAL radio. Any Stewart-Warner dealer listed in this advertisement can furnish you with the identical equipment used by Preston in his tests... the receiver, National battery, Majestic "B" Eliminator, Stewart-Warner tubes and the PRESTON "DX" Radio Ground.

Any dealer listed here will gladly demonstrate Stewart-Warner Matched Unit Radio in your own home... prove to you its superiority of performance... explain to you the reasons for its great popularity. See one of them today.

Los Angeles Dealers

ATWATER RADIO & ELEC. CO.
3289 Glendon Blvd.
3298 Glendon Blvd.
DEAN K. BARRIS
3100 E. Vermont Ave.
BENSON HARDWARE COMPANY
415 Booth Broadway
BIRD & BURHARD
1717 W. Adams St.
CALIFORNIA RADIO SHOP
507 South Figueroa St.
CHAPMAN HOUSE SALES CO.
4274-78 B. Figueroa St.
CLIFF'S RADIO SERVICE
3035 Dorton Ave.
DON FINKLE
3207 West Jefferson
A. W. COOPER
1315 W. 96th St.
HARRY SAVOY
212 W. Jefferson Ave.
HOLLAND ELECTRIC SHOP
5813 Canadian Ave.
HIDLEY RADIO & HIKE HOUSE
817 South Main St.
HINES RADIO
1222 South Broadway
INTERPHONE ELECTRIC CO.
8610 Moorpark Vista Rd.
LESTER RADIO & ELEC. CO.
452 South Broadway
LOVINGER'S MELBONE RADIO
SHOP, 4134 Melrose Ave.

RAY LYON
7119 Compton Ave.
RAY LYON
188 1/2 Florence Ave.
MANCHETTEN RADIO CO.
1022 W. Macomber Ave.
MOORE RADIO SALES CO.
2504 W. Jackson Blvd.
MONAWK BAT. & RAD. CO.
3118 Sunset Blvd.
NILSSON & NELSON
413 Arden Blvd.
NORTON & WOOTEN
2211 N. Broadway
POTTER RADIO SALES CO.
1817 W. 84th St.
R. E. P. ELECTRIC CO.
357 South Vermont Ave.
RADIO SUPER SERVICE CO.
3014 Venice Blvd.
RADIO SUPER SERVICE CO.
5610 Dunsmuir Ave., at Vermont
CHAS. A. ROBINSON
4623 E. Normandie
RADIO ELECTRIC SHOP
742 B. Vermont Ave.
A. C. SINGER
4127 Pasadena Ave.
SOUTHWEST ELECTRIC &
RADIO CO., 807 W. Florence Ave.
WEST STATES ELEC. CO.
4751 Beach Broadway

Hollywood Dealers

NARROWS & CONKRIGHT
3545 Dunsmuir Blvd.

DORAN'S ELECTRIC SHOP
7512 Sherman Ave.
DORAN'S ELECTRIC SHOP
1030 Santa Monica Blvd.
DUNN ELECTRIC CO.
5916 Hollywood Blvd.
NELOISE RADIO SHOP
5663 Melrose Ave.
M. C. PRESTON & SON
11358 Ventura Blvd.,
North Hollywood

Southern California Dealers

ALHAMBRA, LeRoy S. Franklin
944 W. Main
ARABEIN, Holland Electric Co.
177 W. Center St.
ARROYO GRANDE, J. D. Trull
Arroyo Grande Plumbing and
Electric Shop
ARTESA, Wm. B. Hayes
125 N. Main St.
BAKERSFIELD: Chilton-Great
Radio Co.
7410 Twentieth St.
BARTSTOW, Bartow Radio Shop
BELLFLOWER, Standard Radio Shop
501 Rosemead St.
BREA, Bennett's Radio Shop
129 S. Pomona Ave.
CHINO, Woods Radio Company
413 Ninth St.

GOLTON, H. C. Bills
1715 West "11" St.
GOVINA, Harold R. Meuser
113 College St.
DULLER CITY, Cotter City Radio &
Elec. Co.
6715 Washington Blvd.
DOWNEY, M. H. Becker
1416 Orange St.
812 Radio Knob Blvd.
EL SEGUNDO, B. W. McAllister
115 Grand Ave.
EL MONTE, Weaver & King
161 Monte Sierra Ct.
GARDENA, Don Sears
725 W. 165th St.
GLENDALE, Wilbur Hellman
(Broadway Elec.)
202 E. Broadway
GLENDORA, James M. Reed
NEWBORN BEACH, Radio Radio Store
346 Camino Real
HUNTINGTON PARK, H. L. (Radio)
116 E. Irvington St.
MAYNES, Van & Jenkins

INGLEWOOD, R. D. Aylesworth
111 N. Main St.
LANCASTER, E. A. Knoll
BISHOP, Grimm Bros.
LONG BEACH, Alday & Grandall
1115 American Ave.
LONG BEACH, The Electric
Radio Co.
1719 E. Anaheim
LONG BEACH, W. L. Hurrell
140 Pine St.
LYNWOOD, Lynwood Elec. Co.
284 S. Long Beach Blvd.
NEWHALL, C. E. Graham
OCEAN PARK, Crescent Tire and
Supply Co.
Bay and Main Sts.
ORANGE, Roy Don Larson
143 N. Grand St.
PALMS, Bright Radio Elec. Co.
1204 Washington Blvd.
PASADENA, Wicks & Varrault
144 North Lake St.
PASADENA, Premier Radio
11 California St.

Received
STEWART
1366 S
LOS
ANGELES CALIF
PLAYED FOR
FEET AWAY
JAPAN DIST
"BATTERIE
PLENTY WITH
STEWART'S
1366 S
LOS
ANGELES CALIF
PLAYED FOR
FEET AWAY
JAPAN DIST
"BATTERIE
PLENTY WITH

UNION TELEGRAM

CRANFORTH CALIF FEB 20 1929

PRODUCTS SERVICE STATION
SHERBOURNE FOREST
LOS ANGELES CALIF

STATIONS LAST NIGHT ON LOUD SPEAKER BEING ABLE TO HEAR 30
MILES AWAY
SHERBOURNE AND 281 SYDNEY AUSTRALIA ALSO KAGODA AND TOKYO

TOSE STEWART MARINE RECEIVER NEW DX RADIO GROUND MAJESTIC
NATIONAL STORAGE BATTERY AND STEWART WARMER TUBES.

WROTE DOWN SELECTIONS IN PROGRAMS AND REQUESTED CONFIRMATION

C H PRESTON
445 A PER ST

Reproducer -
Model 415 - \$31.50

Model 325 \$52.50
Without Accessories

PASADENA, DeWife Radio
Laboratory
5048 East Colorado Ave.
PASO ROBLES, R. C. Masteo
PICO, Pico Radio Sales
POMONA, George W. Hlatz
183 E. Third St.
REDONDO, L. & L. Bates Dr.
719 Diamond St.
REDLANDS, J. L. Yount
106 W. Citrus Ave.
RIVERSIDE, Frank W. Chesey
960 Market St.
SAN BERNARDINO, Burr, Smith
& Surr
439 Fourth St.
SAN FERNANDO, Willis Row
SAN GABRIEL, A. Burman
3500 N. Hamilton Dr.
SAN LUIS OBISPO, Chas Elec. Co.
281 Main St.
SANTA ANA, Shaffer's Music Store
415 N. Main St.
SANTA BARBARA, Val Folger
723 State St.
SANTA MARIA, Ford & Smart
118 E. Main St.
SANTA MONICA, J. R. Sultz
625 Broadway
SANTA PAULA, The Music Shop
415 N. Main St.
SANTA ROSA, H. Wright
SHERMAN, J. D. Sta.
TAFT, L. H. Bird
115 Center St.
TODONIA, LEVADA
Tonahoe Electric Company
UPLAND, Jay M. Rice
VENICE, Stewart-Warner Radio
Shop
1025 Washington Blvd.
WALNUT PARK, Terminal Electric
108 North St.
WESTMINSTER, Marie Esaki
WHITTIER, M. G. Oidner
129 S. Normandie
WILMINGTON, F. C. Cramer
116 W. Madison St.

Remember - Stewart-Warner Radio Uses
the Famous U.S. Navy Receiving Circuit -
Stewart-Warner Products Service Station
(Wholesale Distributors Stewart-Warner Radio)
366 South Figueroa Street - LOS ANGELES



LESLIE ADAMS
Announcer

Los Angeles, California—467 Meters

KFI

4000 WATTS—840 KILOCYCLES

Radio Central Super-Station of Earle C. Anthony, Inc.
1000 S. Hope. Phone WE. 0331. After 5 P.M., WE. 0337
Class "B" 5000-Watt W. E. Sta., Operating on 4000 Watts

ROBERT HURD, Program Manager

DAILY EXCEPT SUNDAY—

6:15 p. m.—Radiotorial.

MONDAY, WEDNESDAY AND FRIDAY—

KFI Woman's Interest Dept. Under the Direction of Agnes White.
10:20 to 10:40 a. m.—Furnishings for the home by Agnes White,
director of the Dept.

10:40 to 11:00 a. m.—Betty Crocker—Home Service Talks.

WEEK COMMENCING SUNDAY, MARCH 27, 1927

SUNDAY, MARCH 27

- 10:00 a. m.—Morning services by Los Angeles Church Federation.
6:00 p. m.—Program by Russian Academy of Musical Art Trio—Boris Myronoff, piano; Mischa Spiegel, violin; Alex Borrisoff, cello.
6:58 p. m.—Father Ricard's Sunspot weather forecast.
7:00 p. m.—Aeolian Organ recital; Alex Rellily at the console; Nellie Callender Mills, violinist.
8:00 p. m.—Packard Classic Hour. Program. Gretchen Garrett with String Quartet; Florence DuVall, violin; Malcolm Davison, cello; Sue Haury, piano.
9:00 p. m.—Bob Bottger and his Venetians Dance Orchestra; Lois Whitman and Winnie Parker, Harmony duets.
10:00 p. m.—Packard Six Orchestra, Bill Hennesy, director; Dolly MacDonald, soloist; Esther Walker, pianist.

MONDAY, MARCH 28

- 5:30 p. m.—Matinee program.
6:30 p. m.—Gamut Male Quartet.
7:00 p. m.—Johnston and Farrell's Music Box Hour, direction of Genene Johnston, with the Jim, Jack and Gene Trio as soloists.
8:00 p. m.—Program by Ferenz Steiner and Robert Hurd, tenor compositions, by French and German songs with cello; La Verne Bent, accompanist.
9:00 p. m.—Mrs. Edward C. Crossman, contralto; Lucille Whitson, pianist.
10:00 p. m.—Program by Melklejohn Broe.

TUESDAY, MARCH 29

- 5:30 p. m.—The Dragon Hawaiians.
6:00 p. m.—Ruth Rayner, vocalist and pianist.
6:30 p. m.—Bertha Mille English, pianist; Katherine and Malcolm Gurney, duets.
7:00 p. m.—Tarvin Sisters (Imogene and Evelyn); Los Angeles Fire Department Orchestra.
8:00 p. m.—Program of Italian Folk Music, with Virginia Flohri, James Burroughs, and the Cattone String Quartet; Charles Myers accompanist.
9:00 p. m.—Thomas Wallace, baritone; Margaret Vall, contralto; Frances Brackett Kellogg, concert pianist.
10:00 p. m.—Azure Music Club; Edna Cook, Blues singer; Glenn Edmunds and his Collegians Dance Orchestra.

WEDNESDAY, MARCH 30

- 10:20 to 10:40 a. m.—Talk on Better Homes and Gardens for Wagner Nurseries, by Margaret Etheredge.

- 5:30 p. m.—Sebastian's Cotton Club Orchestra.
6:30 p. m.—Silverstone Ladies' Quartet.
7:00 p. m.—Ray Fisher's Original Victoriana.
7:30 p. m.—Nick Harris, Detective stories.
7:45 p. m.—Helen Guest.
8:00 p. m.—Calpet Trio, James Burroughs tenor, on the California Petroleum Corporation program.
9:00 p. m.—Gleaner Quartet: Sam Iskowitz, violinist; Belle Levinson, soprano.
10:00 p. m.—Sunset Instrumental Quartet; Dorothy Ruth Miller, concert pianist; Virginia McCoy, contralto.

THURSDAY, MARCH 31

- 5:30 p. m.—Legion Night Club Orchestra.
6:30 p. m.—Clarice Russell and Leslie Adams, in a popular program.
7:00 p. m.—University of Southern California program.
8:00 p. m.—Drama Hour.
8:30 p. m.—Grace Mead, soprano; Scott Binkely, Scotch comedian.
9:00 p. m.—J. Maurice Woods, baritone; Ethel Glassman Clark, soprano; Robert Young, solo pianist.
10:00 p. m.—Program of modern classical music; Maud Darling Weaver, contralto; Lorelle Fierstad, violinist.

FRIDAY, APRIL 1

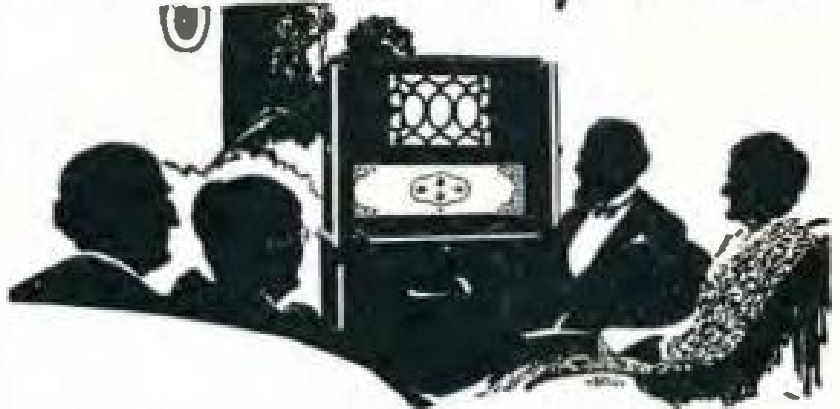
- 5:30 p. m.—Henry Starr, pianist and vocalist.
6:30 p. m.—Vest Pocket Period.
7:00 p. m.—Aeolian Organ recital, Alex Rellily at the console; Lily D'Albert, soprano.
8:00 p. m.—Program by Paul Roberts and Leslie Adams.
9:00 p. m.—Program of classical music by Alma Frances Gordon and Lilian Ariel, pianist.
10:00 p. m.—Packard Ballad Hour; Fred Wesley.

SATURDAY, APRIL 2

- 5:30 p. m.—Del Monte Orchestra.
6:30 p. m.—Collegiate Aeolians Quartet; Parks (Frances and June).
7:30 p. m.—Felipe Delgado, Spanish baritone, with Edna Clark Muir, pianist; Media Hora Espanola.
8:00 p. m.—Composers' Hour by Kurt Muller with Teodora Wislawka.
9:00 p. m.—Kitty Short, soprano; Leo Rabbitz, violinist.
10:00 p. m.—Packard Radio Club; Esther Walker, pianist; Red Wyatt and his uke; Helen Guest, ballad singer; Harmony Twins; Hale Hooper, tenor.
11:00 p. m.—KFI Midnight Frolic; Virgil Ray's Winter Garden Orchestra; Mosby's Dixieland and Blue Blowers, and soloists.

for Kellogg, Gilfillan and these great accessories Sherman, Clay & Co!

Good
Territory
Still Open
to Live
Dealers



Kellogg Console Model, shown above, contains Speaker of "folded air column" type; amplifies all frequencies impartially and delivers tone exactly as broadcast. Non-microphonic — cannot squeal or howl.

Without Accessories, \$375.00.

Table Model, Without Accessories, \$230.00.

Coast Distributors—

Sherman, Clay & Co.

Victor Distributors

Los Angeles: 10th and Santee Sts.

San Francisco: 536 Mission St.

Oakland: 5175 Telegraph Ave.

Portland, 487 Clason St.

Seattle: Republican St. and Terry Ave.

Spokane: 330 West Sprague Ave.

- Victor**
loudspeakers
- Rola**
cone speakers
- R. C. A.**
radiotrons
- Eveready**
batteries
- Philco**
batteries and
socket powers
- Westinghouse**
"Auto-Power"
A-Battery
eliminators
- All-American**
B-Battery
eliminators
- O'Neil**
cone loud-
speakers
- Brach**
relay switches
- Gilfillan**
receiver
- Kellogg**
receiver

For information as to DEALER TERRITORY clip and mail this to nearest Sherman Clay & Co. wholesale branch. (R. D.)

Name _____

Address _____

Interested in _____



"Uncle John" Daggett
Announcer

Los Angeles, California—405.2 Meters

KHJ

500 WATTS—740 KILOCYCLES

Times Bldg., First and Broadway, Los Angeles
Owned and Operated by Los Angeles Times

JOHN S. DAGGETT, Manager and Program Announcer
Phone MET. 0700

"Kindness, Happiness and Joy"

NIGHTLY EXCEPT SUNDAY AND MONDAY—

6:00 to 8:30 p. m.—KHJ Concert Trio and J. Walter Leopold.
7:30 p. m.—Scripture Reading.

SUNDAY, MARCH 27

- 10:00 a. m.—Sermon from the KHJ Studio, by Swami Dhirananda, head of the Mount Washington Educational Center.
10:30 a. m.—Morning service from the First Methodist Episcopal Church, Arthur Blakely, organist.
7:00 to 8:00 p. m.—Evening service from the First Methodist Episcopal Church.
8:00 to 10:00 p. m.—News items. KHJ Studio program including Frederick MacMurray, viola soloist; Grace Currey, harpist, and Louise Miller, pianist.

MONDAY, MARCH 28

Silent all day.

TUESDAY, MARCH 29

- 2:30 p. m.—Bridge game.
6:30 p. m.—Children's program with Queen Titania and her Sandman; George Kerr, mandolin soloist; Marguerite Bringham, "Nightingale," and others.
7:40 p. m.—H. M. Robertson, "Dogs."
8:00 to 9:00 p. m.—News items and program presented by Women's Press Club of Southern California.
9:00 to 10:00 p. m.—Musical program.
10:00 to 11:00 p. m.—L. A. Railway Orch.

WEDNESDAY, MARCH 30

- 2:30 p. m.—Garden talk by Fred C. McNabb.
6:30 p. m.—Children's hour, including Dick Winslow, juvenile reporter, Lois Jane Campbell, "Brown Eyes;" Patricia Eccleston, "Little Daffodil;" Glenn Fitz, "Optimistic Mascot;" Vivian Marple, "Blue Bell of KHJ;" Viola Essen, "B. B.," and Constance Jeannette McCoy, "Sweet Marie."
7:40 p. m.—Dr. Mars Baumgardt.
8:00 to 9:00 p. m.—News items and studio program.
9:00 to 10:00 p. m.—Selwyn Harris studio program.
10:00 to 11:00 p. m.—Jinnistan Vale Orch.

Program Published as Submitted by the Station.

THURSDAY, MARCH 31

- 6:30 p. m.—Children's hour, including Joyce Coad, "Little Red Riding Hood;" Dickie Brandon, reader; June Brandon, contralto; Rosetta Lowin, "Little Curley Lock," and others.
7:40 p. m.—Dr. Philip M. Lovell, "Care of the Body."
8:00 to 10:00 p. m.—News items. Program de luxe with Zoellner String Quartet; Leo H. Sansiper, Russian baritone; Louise Miller, pianist.
9:00 p. m.—Arthur Edwin Wake, assistant pastor of the Willshire Presbyterian Church, will give his weekly talk.
10:00 to 11:00 p. m.—Glenn Edmunds and his Variety Four.

FRIDAY, APRIL 1

- 6:30 p. m.—Children's hour with Henrietta Poland, "Little Forget Me Not;" Roberta Bush, "Firefly of KHJ;" Richard Hendrick, "Little Minister;" Catherine Cotter, "Sweetheart of Radioland;" Margaret Bond violinist, and Bettiemae Pfefferkorn, "Bob O'Link."
7:40 p. m.—Thomas F. Ford, "Book Reviews."
8:00 to 10:00 p. m.—News items. Novelty program from the studio.
9:00 p. m.—Talk on international relations.

SATURDAY, APRIL 2

- 6:30 p. m.—Children's hour. Helen Berta Hansen, "Musical Child;" Mercedes Marlowe, "Boy Girl;" Nona Clapp, "Sunshine Fairy;" Dolly Wright, "Dolly of Radioland;" Arthur Stevens, "King Arthur;" Marjorie G. Lowe, "June Bug," and Gabriel Bertold, cornet soloist.
8:00 to 10:00 p. m.—News items. Old-time frolic program with Mr. and Mrs. Benjamin Sears, old-time fiddler; Los Angeles Railway Hawaiian Quartet; E. A. Mulford, "Dixie Dan," old-time tunes. Mammy Lou of KHJ, and others.

PALMER RADIO LABORATORY

Established 1923

Specializing in

SUPER-HETERODYNES AND INFRADYNES

Intermediate Transformers Made and Calibrated

Also all other types of receivers made to operate efficiently

Satisfaction Guaranteed or No Charge

Advice Free •

Open Evenings Till 9 P. M.

Courtesy to All

4529 S. Vermont, Los Angeles. Phone VERmont 7883

The Catalina Island Swim

One of these sets accompanied Mrs. Margaret Hauser in her swim.
Several of the swimmers had this set on their pilot boat.



The Companionable Set

*Light weight—easily handled—can be taken any place.
Perfect reproduction, selectivity, volume; beautifully designed.
Will Fit in Any Setting.*

The Lowest Priced Set of Its Kind on the Market.

ON DISPLAY IN LOS ANGELES AT

The Ambassador Hotel The Biltmore Hotel
Subway Terminal Waiting Room (between 4th and 5th on Hill St.)
13 Mercantile Arcade

Distributed by

Johnson Radio Co., 688 Geary Street, San Francisco
The Radio Studios, 1207 Fourth Ave., Seattle

KEMPER RADIO LABORATORY

1236 Santee St.

LOS ANGELES

Westmore 2504

Makers of Kemper Amphiphonic Console



HAROLD ISBELL
Announcer

Hollywood, California—337 Meters

KNX

750 WATTS—890 KILOCYCLES
LOS ANGELES EVENING EXPRESS
Paul G. Hoffman's Studebaker Bldg., 6116 Hollywood
Blvd., Hollywood. Phone HEmstead 4101
NAYLOR ROGERS, Manager and Program Director
GLEN RICE, Asst. Manager.
"The Voice of Hollywood"

DAILY EXCEPT SUNDAY—

- 6:45 to 8:00 a. m.—Exercises by Dr. P. M. Seizas, courtesy of Producers of Mission Orange Juice.
- 8:00 a. m.—Inspirational talk and morning prayer.
- 8:55 a. m.—Time signals from Washington, D. C.
- 9:00 a. m.—Radio Shopping News by Coray Preston Rittmeister.
- 10:00 a. m.—Town Crier of the Day's morning message.
- 10:30 a. m.—Kate Brew Vaughn Director Household Economics Dept., Evening Express, except Friday and Saturday

- 12 noon—Magnavox Radio Orchestra, courtesy of Listenwalter & Cough.
- 12:30 p. m.—W. F. Alder Travelogue.
- 1:30 p. m.—Radio Trades Ass'n Program.
- 4:00 p. m.—Lost and Found Column.
- 4:55 p. m.—Market reports.
- 5:00 p. m.—Optimists Daily Messages, presenting the Optimist Male Quartet.
- 5:30 p. m.—Orthophonic Victrola.
- 6:00 p. m.—Biltmore Hotel Orchestra, broadcast from the Biltmore Dining Room.
- 8:30 p. m.—Dinner hour concert presenting the Yale Radio Battery Orchestra.

DAILY EXCEPT SUNDAY AND TUESDAY—

- 11:00 p. m.—Hotel Ambassador, Gus Arnheim's Coconut Grove Orchestra

WEEK COMMENCING SUNDAY, MARCH 27, 1927

SUNDAY, MARCH 27

- 10:00 a. m.—First Presbyterian Church of Hollywood, Rev. Stewart P. MacLennan.
- 2:00 to 4:00 p. m.—City Park Board musical program.
- 4:00 p. m.—Roberts Golden State Band.
- 5:15 p. m.—All Souls' Church.
- 6:30 p. m.—Hollywood Unitarian Church.
- 7:00 p. m.—First Presbyterian Church of Hollywood, Rev. Stewart P. MacLennan.
- 8:00 p. m.—Circle Theatre Concert Orchestra and organ recital.
- 9:00 p. m.—Fifth Street Store courtesy program.

MONDAY, MARCH 28

- 12:45 p. m.—C. P. R.'s musical program.
- 3:00 p. m.—First Presbyterian Church of Hollywood.
- 7:00 p. m.—George J. Birkel Music Co. presenting the Orthophonic Victrola.
- 7:30 p. m.—Playlet, courtesy Overall Furniture Company.
- 8:00 p. m.—L. W. Stockwell Co. courtesy program, presenting Calmon Luboviski, master violinist, and Claire Mellonino, concert pianist.
- 9:00 p. m.—B. F. Goodrich Rubber Co. of Akron, Ohio, Goodrich Silvertown Cord Orchestra.
- 10:00 p. m.—Biltmore Hotel Orchestra.

TUESDAY, MARCH 29

- 11:00 a. m.—Dr. R. H. Gerber, specialist. Eye Strain and Nervous Diseases.
- 3:00 p. m.—Los Angeles Police Department musical program.
- 4:00 p. m.—Radio Matinee with Louise Howatt, contralto.
- 7:00 p. m.—Wiltshire Ionaco Company courtesy program presenting Charles Hamp.
- 7:30 p. m.—Fitzgerald Music So. presenting the Ampico Knabe Piano.
- 8:00 p. m.—Feature program.
- 9:00 p. m.—Feature program.
- 10:00 p. m.—Hotel Ambassador; Gus Arnheim's Coconut Grove Orchestra.

WEDNESDAY, MARCH 30

- 12:45 p. m.—C. P. R.'s musical program.
- 3:00 p. m.—Paul Hugon.
- 3:30 p. m.—Don Warner, pianist.
- 4:00 p. m.—Feature program.
- 7:00 p. m.—George J. Birkel Music Co. courtesy program.
- 8:00 to 10:00 p. m.—Feature program.

THURSDAY, MARCH 31

- 11:00 a. m.—Nature talk, courtesy Marvel Ant Gelatine Co.
- 7:00 p. m.—Carthay Circle Theatre organ recital, courtesy Overall Furniture Co.
- 8:00 p. m.—National Home Equipment Co. courtesy program.
- 9:00 to 10:00 p. m.—Tucker and Charleson.
- 10:00 p. m.—Feature program.

FRIDAY, APRIL 1

- 12:45 p. m.—Charles Weeks, talking on "intensive Little Farms."
- 3:00 p. m.—L. A. District Federation of Women's Clubs musical program.
- 4:00 p. m.—Boy Scouts' musical program.
- 7:00 p. m.—Fitzgerald Music Co., presenting the Ampico Knabe Piano.
- 7:30 p. m.—Dearden's Furniture Company, courtesy program.
- 8:00 p. m.—Davis Perfection Bread Co., courtesy program, presenting the Royal Order of Optimistic Do-Nuts.
- 9:00 p. m.—Fada Radio Co., courtesy program.
- 10:00 p. m.—Main events from the American Legion Stadium.

SATURDAY, APRIL 2

- 12:45 p. m.—C. P. R.'s musical program.
- 3:00 p. m.—Town Crier of the Day and his Pals.
- 7:00 p. m.—Stories of insect life by Harry W. McSpadden.
- 7:15 p. m.—Announcement of Sunday services of the leading Los Angeles churches.
- 7:30 p. m. to 10:00 p. m.—Feature program.
- 10:00 p. m.—Biltmore Hotel Orchestra.
- 12:00 m.—KNX Frolic from the Main Studio.

Program Published as Submitted by the Station

Tune in KMTR, Monday, March 28th, 9 to 10 P. M., for
Radio Doings Prize Program

ATWATER KENT RADIO

*Ideal for multiple speaker
installations*

The ever increasing demand for Radio Receivers powerful enough to operate many Speakers on one output circuit has found ready fulfillment in the Atwater Kent Model 32, seven-tube, one dial receiver.

Atwater Kent Radio is especially adapted for use in private homes, hospitals, apartments and hotels where extraordinary power is needed. And remember—this power is fully controlled for individual use—can be regulated at will from a whisper to full toned volume!



Model 32
Atwater Kent Receiver, with
One Dial, \$145.
(Less Accessories)

Model H
Atwater Kent Radio Speaker, \$22

OTHER MODELS
with One Dial,
\$75 and \$90
(Less Accessories)

RAY THOMAS INC.
Atwater Kent Distributor

1248 S. Hope St. WE 6334
LOS ANGELES



BILL RAY
Announcer

Hollywood, California—252 Meters

KFWB

500 WATTS—1190 KILOCYCLES
WARNER BROS. MOTION PICTURE STUDIOS
Warner Bros. West Coast Studio, 5542 Sunset Blvd.
GERALD L. KING, Mgr. WM. RAY, Asst. Mgr.
Phone GL. 9461
"Music Land"

DAILY EXCEPT SUNDAY—

- 12:30 to 1:30 p. m.—Classified Hour.
- 5:40 to 6:00 p. m.—Beauty Talk.
- 6:00 to 7:00 p. m.—Pontiac Six Dinner Hour.
- 10:00 to 11:00 p. m.—Musical program from Mayfair Hotel.
- 11:00 to 12:00 p. m.—Dance music from El Patio Ballroom.

MONDAY, TUESDAY AND WEDNESDAY—

- 5:00 to 5:40 p. m.—Children's Hour

WEEK COMMENCING SUNDAY, MARCH 27, 1927

SUNDAY, MARCH 27

- 2:00 to 3:00 p. m.—Organ recital on the world's mightiest organ, located in Roosevelt Memorial Park, Los Angeles, broadcast by KXBR and rebroadcast by KFWB.
- 8:30 to 9:00 p. m.—Program by courtesy of Southern California Music Co.
- 9:00 to 11:00 p. m.—Daily news items at 9 and 10. Warner Bos. Frolic, introducing Frances St. George, KFWB jazzman's Girl; Art Goodstein, popular songs; Ernest Burley, tenor; Helen Waltenberg, soprano; Harry G. Kelps and his Movieland Orchestra, and others.

MONDAY, MARCH 28

- 7:00 to 8:00 p. m.—Program by courtesy of J. N. Pyles National Detective Service, introducing Vernon Rickard, tenor; Pyles National Detectives Concert Orchestra; Mr. J. N. Pyles will give a brief talk.
- 8:00 to 9:00 p. m.—Virginia King, blues songs; Stark Sisters, popular numbers; Owen Fallon's Californians.
- 9:00 to 10:00 p. m.—Dan Gridley, tenor; Warner Bros. European Novelty Orch.

TUESDAY, MARCH 29

- 10:45 to 11:00 a. m.—Enid Garnett on "Feminine Fads and Fancies."
- 4:45 to 5:00 p. m.—Dr. Clarke on "Diet."
- 7:00 to 7:30 p. m.—Program by courtesy of Southern California Music Co.
- 7:30 to 8:00 p. m.—Program sponsored by the Molo Laboratories featuring string trio and soloist.
- 8:00 to 9:00 p. m.—Jack, Jim and Jean Trio. Grant LaMont, popular songs; June Parker, blues songs.
- 9:00 to 10:00 p. m.—LaMont Stetzer, baritone; Winifred Pennell, trio.

WEDNESDAY, MARCH 30

- 10:45 to 11:00 a. m.—Enid Garnett on "Feminine Fads and Fancies."

- 7:00 to 7:30 p. m.—Thirty minutes of sunshine by Charles W. Hamp, director of radio activities for the Iona Company, presenting the Ionaco.

- 7:30 to 8:00 p. m.—Dick Coburn, popular song writer.

- 8:00 to 9:00 p. m.—Ward Hill, blues songs; June Parker, blues songs; Glen Edmunds and his Collegians.

- 9:00 to 10:00 p. m.—Ernest Burley, tenor; Marguerite LeGrand's String Trio.

THURSDAY, MARCH 31

- 10:45 to 11:00 a. m.—Enid Garnett on "What the well groomed woman of today is doing with her 'Crowning Glory.'"

- 7:00 to 7:30 p. m.—Program by courtesy of Southern California Music Co.

- 7:30 to 8:00 p. m.—Program sponsored by the Molo Laboratories, featuring string trio and soloist.

- 8:00 to 9:00 p. m.—Kenneth Gillum, comedy songs; Camilla McDonald, blues songs; Warner Bros. Hawaiian Trio.

- 9:00 to 10:00 p. m.—Joseph Tazerman, tenor; Ray Bailey's String Orchestra.

FRIDAY, APRIL 1

- 7:00 to 8:00 p. m.—Warner Bros. Hawaiian Trio and entertainers.

- 8:00 to 9:00 p. m.—Ruth Nicholson, blues songs; LeRoy Kullberg and his ukulele; Warner Bros. Orchestra.

- 9:00 to 10:00 p. m.—Melody Makers' Periodic Studio Chatter at 9:30.

SATURDAY, APRIL 2

- 7:00 to 8:00 p. m.—Carl Dye and his Melody Makers; Esther White, character numbers.

- 8:00 to 9:00 p. m.—Program courtesy of the MonaMotor Oil Company, featuring LaMont Stetzer, baritone; MonaMotor Oil Company String Orchestra.

Program Published as Submitted by the Station.

LIKE "WILLYS-OVERLAND"

"Willys Over-Air" Has Won Public Confidence

More and more radio lovers in New York are having their sets made by private laboratories, because it is the true means of obtaining true reproduction and high selectivity, with factors of location taken fully into account.

WILLYS OVER-AIR PRACTICAL RADIO LABORATORY

is following the example of their friends, Lacault and Fenway, of New York, in conducting a high-class private laboratory equipped to handle all classes of radio service. The location is:

2021 Temple St., Los Angeles, Calif.

Phone Fitzroy 1781

RADIOLA SPECIALISTS

We make any RCA SUPER HETERODYNE include in its tuning range the stations between 200 and 230 meters, at a nominal cost. Not an attachment but a fundamentally sound improvement in the circuit. We have also developed improvements for the Radiola 20 and the Radiola 28.

Our Electrical Phonograph

is creating a furor among the music lovers who demand the last word in quality reproduction. We build portable and console models, or this equipment can be installed in your old phonograph. Furthermore we guarantee as faithful reproduction as that given by any machine offered to the public.

**MAKERS OF THE PROFESSIONAL MODEL SUPER
HETERODYNE**

LABORATORY OF RADIO STANDARDS

2408 West Vernon — VErmont 6543

E. K. HAYES

Los Angeles, Calif.

V. M. BITZ

STANDARD RADIO CO.

417 West Pico St., Los Angeles, Calif.

FADA, ATWATER KENT, FEDERAL AND WESTERN ELECTRIC DEALER

We Carry a Complete Line

Open Model Atwater Kent Wave Length Cut Down to 200 Meters.
We Are Also Making a Specialty of Sharpening Tuning in Any Radio Set.
Two-Tube Harkness Changed to 3-Tube, Guaranteed Perfect Tune-out on
Local Stations

Telephone WEstmore 1560

Open Saturday Evenings Until 9 o'clock

\$1

Down

Will place a

MAJESTIC

—“B” SUPPLY—

—In Your Home

Then

\$1

A
Week

\$15 Baldwin Symphony Speakers at \$7.50

ESTAB. 1904

625, So. Main
Opposite
P. E. Depot

J. C. RENDLER

TRinity 4281
Los Angeles

OPEN EVENINGS “RADIO KIT HEADQUARTERS”

MAIL ORDERS



G. ALLISON PHELPS
Manager and Announcer

Hollywood, California—370.2 Meters

KMTR

500 WATTS

KMTR RADIO STATION

1025 N. Highland Avenue. Telephone HOLLY 3030
Owned and Operated by C. C. JULIAN
FORBES W. VAN WHY, Engineer-in-Charge

DAILY EXCEPT SUNDAY—

- 7:00 to 7:30 a. m.—Prof. Barclay L. Severn's Setting-Up Exercises
12:00 to 12:30 p. m.—Leighton's Arcade Cafeteria Orchestra.
12:30 to 1:30 p. m.—Who's Who and What's Happening.
1:30 to 2:30 p. m.—Radio Press Agent Hour.
2:30 to 3:30 p. m.—KMTR Tea Dance Program.
4:00 to 4:15 p. m.—Vacation Days.
5:30 to 6:00 p. m.—White King Male Quartet and Mona Content, pianist, courtesy Los Angeles Soap Co.
6:00 to 6:15 p. m.—Nightly Doings.
6:15 to 6:45 p. m.—Leighton's Arcade Cafeteria Orchestra, George Redman, director.
6:45 to 7:30 p. m.—Fitzgerald Music Company, courtesy program
10:00 to 11:00 p. m.—Miller's Cafe Lafayette Dance Orchestra.

WEEK COMMENCING SUNDAY, MARCH 27, 1927

SUNDAY, MARCH 27

- 5:30 to 6:15 p. m.—White King Male Quartet—Courtesy Los Angeles Soap Company.
6:15 to 8:00 p. m.—Miller's Cafe Lafayette Concert Orchestra—Courtesy of Chapman Ice Cream Company.
8:00 to 9:30 p. m.—Loren Powell's Little Symphony.

MONDAY, MARCH 28

- 11:45 to 12:00 m.—Golf Talk by S. E. Connelly of L. A. Athletic Club.
4:15 to 4:45 p. m.—J. T. Redding, representing Wilshire's Ionaco.
7:30 to 8:00 p. m.—Overall Furniture Co. Playlet.
8:00 to 9:00 p. m.—Eureka Vacuum Cleaner Company—Courtesy Program.
9:00 to 10:00 p. m.—Precision Electric Manufacturing Company—Prize Radio Doings Program.

TUESDAY, MARCH 29

- 10:00 to 10:15 a. m.—Charles Hamp, representing the Iona Company.
10:15 to 11:00 a. m.—Georgia O. George—"The Physiology and Psychology of Beauty."
11:00 to 12:00 m.—Talk by Madame Alene.
4:15 to 5:00 p. m.—Le Roy Parry and His Elite Dance Orchestra.
7:30 to 8:00 p. m.—Courtesy Program.
8:00 to 9:00 p. m.—Maxwell House Coffee Company—Courtesy Program, featuring Maxwell House Coffee Orchestra and Lenore Duncan, contralto.
9:00 to 10:00 p. m.—Hollywood Storage Company—Courtesy Program.

WEDNESDAY, MARCH 30

- 10:00 to 10:30 a. m.—Dr. S. J. Mathieson, pastor of the Hollywood Christian Church.
5:00 to 5:30 p. m.—Dr. Wesley M. Barrett—"Perfect Eyesight Without Glasses."
7:30 to 8:00 p. m.—Paralta Studio, courtesy program.

- 8:00 to 10:00 p. m.—Hollywood Storage Company—Courtesy Program.

THURSDAY, MARCH 31

- 10:00 to 10:15 a. m.—Fifteen Minutes of Sunshine with Charles Hamp, director of Radio Activities for the Iona Company.
10:15 to 10:45 a. m.—Dr. Paul J. Dorosh—"Diet Question Box."
10:45 to 11:45 a. m.—Georgia O. George—"Psychology of Beauty."
11:45 to 12:00 m.—Golf Talk by S. E. Connelly of the Los Angeles Athletic Club.
4:15 to 4:45 p. m.—J. P. Redding, representing Wilshire's "Ionaco."
8:00 p. m.—Winslow B. Felix program.

FRIDAY, APRIL 1

- 4:15 to 4:45 p. m.—Dr. Lowell C. Frost of the Hollywood High School—"The Conservation of Boys."
7:30 to 8:00 p. m.—Thirty Minutes of Sunshine with Charles Hamp, director of Radio Activities for the Iona Company.
8:00 to 9:00 p. m.—Alta Club Ginger Ale Company, presenting the famous Len Nash Alta Club Hawaiian-American Band.
9:00 to 10:00 p. m.—Hollywood Storage Co. Program.

SATURDAY, APRIL 2

- 10:00 to 10:15 a. m.—Charles Hamp, representing the Iona Company.
11:30 to 12:00 m.—Gordon Whitnall of the City Planning Commission.
4:15 to 4:30 p. m.—Irene Hobson's Beauty Talk.
4:30 to 5:00 p. m.—Radio Talk to Radio Fans by F. W. Van Why.
7:30 to 7:40 p. m.—Talk by representative of the Sheriff's Office of Los Angeles.
7:40 to 8:00 p. m.—KMTR Movie Club.
8:00 to 9:00 p. m.—Luna Park program.
9:00 to 10:00 p. m.—Program of the Los Angeles Police Department.

Program Published as Submitted by the Station.

Alternating Current Transformers

Filament
Trans. .
\$5.00

I Specialize on Operating Sets
Without Batteries

RAY CAMPBELL

Plate
Trans.
\$5.00

1217 Dwiggins Street, near N. Huntington Drive, Two Blocks from Sierra Vista Station,
LOS ANGELES, CALIF. Phone GARfield 7891. Wholesale Dealers: COOK-NICHOLS.

Selling Like Hot Cakes

The Powell 'B' Eliminator

Uncondition-
ally
Guaranteed



\$12²⁵

Absolutely No Hum

Operates any set from light socket without the use of expensive and troublesome "B" batteries. A large surplus of power at 100 volts and at a cost of only a few cents a year.

MORE VOLUME - - MORE DISTANCE
GREATER SATISFACTION
BETTER QUALITY - - BETTER PRICE

No Tubes, No Acid and Nothing Else to Buy

A ten-day trial with absolute satisfaction or money back

GUARANTEE

This instrument is the result of months of experimenting and exhaustive tests. The best of materials and workmanship have been combined to insure its satisfaction with the user and it is guaranteed unconditionally for one year. If for any reason it fails to perform satisfactorily it should be returned to the seller, who is instructed to repair or replace, free of charge.

Call or Telephone VERmont 1619 for Information

Powell Manufacturing Co.

4009 S. Western Ave.

Los Angeles, Calif.



M. E. CARRIER

Announcer

Los Angeles, California—294 Meters

KTBI

750 WATTS—1030 KILOCYCLES
BIBLE INSTITUTE OF LOS ANGELES
MR. M. E. CARRIER, Manager
PROF. H. G. TOVEY, Director of Programs
Phone ME. 6701

DAILY EXCEPT SUNDAY—

8:45 to 9:15 a. m.—Devotional Hour.

2:00 to 3:00 p. m.—Inspirational Hour.

DAILY EXCEPT FRIDAY AND SUNDAY—

7:15 to 8:00 p. m.—Aunt Martha's Children's Hour.

WEEK COMMENCING SUNDAY, MARCH 27, 1927

SUNDAY, MARCH 27

10:45 a. m. to 12:30 p. m.—Regular service of the Church of the Open Door.

3:00 to 4:00 p. m.—Jewish Radio Hour. Bible Exposition by Rev. David L. Cooper.

6:00 to 7:00 p. m.—Radio Vesper Service. Sermon by Rev. James H. Hutchins.

7:15 to 9:30 p. m.—Regular evening service of the Church of the Open Door. Sermon by Dr. John McNeill.

MONDAY, MARCH 28

7:15 to 8:00 p. m.—Aunt Martha's Children's Hour.

8:00 to 9:00 p. m.—Bible Exposition by Rev. Albert S. Heita.

TUESDAY, MARCH 29

7:15 to 8:00 p. m.—Aunt Martha's Children's Hour.

8:00 to 9:00 p. m.—Bible Exposition by Dr. M. E. Dodd.

WEDNESDAY, MARCH 30

9:15 to 9:45 a. m.—Sylvia's Rainbow Hour.

7:15 to 8:00 p. m.—Aunt Martha's Children's Hour.

8:00 to 9:00 p. m.—Bible Exposition by John McNeill.

THURSDAY, MARCH 31

7:15 to 8:00 p. m.—Aunt Martha's Children's Hour.

8:00 to 9:00 p. m.—Bible Exposition by Rev. Wm P. Hardy.

FRIDAY, APRIL 1

9:15 to 9:45 a. m.—Sylvia's Rainbow Hour.

8:15 to 7:00 p. m.—Aunt Martha's Children's Hour.

7:00 to 8:00 p. m.—Exposition of International Sunday School lesson by Rev. John Hubbard.

8:00 to 9:00 p. m.—Bible Exposition by Dr. John McNeill.



G. N. NICHOLS

Announcer

Los Angeles, California—275.1 Meters

KFSG

ANGELUS TEMPLE, ECHO PARK, Fitzroy St 21
AIMEE SEMPLE McPHERSON, Founder, President
RODERICKE MORRISON, Program Manager
ESTHER FRICKE GREENE, Organist
GLADWYN N. NICHOLS, Musical Director & Announcer
P. S. LUCAS, Technician in Charge
"Four Square Gospel"

DAILY EXCEPT SUNDAY AND MONDAY—

10:30 to 11:30 a. m.—Sunshine Hour.

11:30 a. m. to 12:30 p. m.—Noonday Musical.

6:30 to 7:30 p. m.—Angelus Hour.

DAILY EXCEPT SUNDAY, MONDAY, WEDNESDAY, SATURDAY—

2:30 to 3:30 p. m.—Gray Studio Program.

WEEK COMMENCING SUNDAY, MARCH 27, 1927

SUNDAY, MARCH 27

10:30 a. m. to 12:30 p. m.—Sunday morning worship. Sermon by G. N. Nichols.

2:30 to 4:30 p. m.—Afternoon Service.

6:30 to 8:00 p. m.—Musical Hour. Angelus Temple Band and choir.

8:00 to 9:30 p. m.—Revival Service by A. C. Carr.

10:00 to 11:00 p. m.—Organ Recital by Esther Fricke Greene.

TUESDAY, MARCH 29

3:30 to 4:30 p. m.—Vesper Hour. Organ Recital by B. Earnest Ballard.

6:30 to 7:30 p. m.—Angelus Hour. Program arranged by Rodericke H. Morrison.

7:30 to 9:30 p. m.—Evangelistic services by Student Evangelists.

WEDNESDAY, MARCH 30

2:30 to 5:30 p. m.—Divine Healing Service

6:30 to 7:30 p. m.—Angelus Hour. Program arranged by Rodericke H. Morrison.

7:30 to 9:30 p. m.—Regular mid-week prayer service by "The Gleaners."

THURSDAY, MARCH 31

3:30 to 4:30 p. m.—Vesper Hour. Organ recital by B. Earnest Ballard.

6:30 to 7:30 p. m.—Angelus Hour.

7:30 to 9:30 p. m.—Regular Water Baptism Service. Temple Choir.

9:15 to 10:00 p. m.—Gray Studio Program.

10:00 to 11:00 p. m.—Organ Recital by Esther Fricke Greene.

FRIDAY, APRIL 1

3:30 to 4:30 p. m.—Vesper Hour. Organ Recital by Esther Fricke Greene. Angelus Hour. Angelus Temple Band.

7:30 to 9:30 p. m.—Crusader Rally. "Gospel Six" in charge.

10:00 to 11:00 p. m.—Back Home Hour.

SATURDAY, APRIL 2

3:30 to 4:30 p. m.—The Children's Happy Hour.

6:30 to 7:30 p. m.—Angelus Hour.

7:30 to 9:30 p. m.—Special Home Coming Service for Aimee Semple McPherson.

Program Published as Submitted by the Station.

Something every housewife will want



Eskimo Kitchen Mechanic

Ideal for mixing drinks, mayonnaise and dressings, whipping cream, beating eggs and for performing many other operations formerly done by hand.

A Good Buy At Low Cost

List \$8.00

Everybody likes Pop-corn

Pop corn is an ideal fill-in for light refreshments after the game, theatre, or for unexpected guests.

Now it's so easy to make with an Excell Electric Corn Popper. Any child can safely use it. Merely connect to any light socket and in a jiffy you have tender, flaky, delicious pop-corn.



List Price \$2.75

See Your Nearest Dealer and Get These Two Appliances

Cook-Nichols Co.

482 South Fair Oaks Anuve
Pasadena, California

411 South San Pedro Street
Los Angeles, California

WHOLESALE ONLY



Dave Ward

Hollywood, California—226 Meters

KFQZ

1641 North Argyle Ave., Hollywood, California
Gladstone 3197; GLadstone 3198
DAVE WARD, Program Director and Announcer
L. E. TAFT, Technical Engineer
"The Palace Bungalow Studio"

DAILY EXCEPT SUNDAY—

6:00 to 7:00 p. m.—Panatlope Dinner Hour.

MONDAY, TUESDAY, WEDNESDAY THURSDAY—

12:00 to 1:00 p. m.—Hazel McCauley and the Office Boy.

3:30 p. m.—Thursday. Try-outs (not broadcast).

WEEK COMMENCING MONDAY, MARCH 28, 1927

MONDAY, MARCH 28

7:00 p. m.—L. E. Taft on Radio Technology.

7:30 p. m.—Hoot Gibson's Trio, Kathrine Williamson and "Red" Wyatt.

8:00 p. m.—Myra Belle Vickers.

9:00 p. m.—Yellow Jackets, L. A. Railway Quartet, Wendell Smith, and Virginia King, accompanied by Mable King.

TUESDAY, MARCH 29

7:00 p. m.—Marion Boogar and Earl Lawrence. "The Novelty Duo"; Warren Peterson and Bud Overbeck.

8:00 p. m.—Neapolitan Four and C. Howard Paxton.

9:00 p. m.—Police and Fire Joint program, Officer Robt. F. Tracy.

WEDNESDAY, MARCH 30

7:00 p. m.—Clint Stevenson's Trio, Ed Pose and Helen Boyd.

8:00 p. m.—Bob Buckner and his Sole Killers, Art Goodstein and Lee Bolln.

9:00 p. m.—Yellow Jackets, Honeywell Twins, Virginia King, accompanied by Mable King, and Jack Goode.

THURSDAY, MARCH 31

7:00 p. m.—L. E. Taft on Radio Technology.

7:30 p. m.—Jack Martin's Trio, and Ruth Raynor.

8:00 p. m.—LeRoy Parry's Elite Orchestra, and Ned Miller.

9:00 p. m.—L. A. Railway Orchestra, the Harmony Twins, Helen Simpson and Esther Ware.

FRIDAY, APRIL 1

12:00 noon—Greenwich Village Orchestra and Babette Barker, soloist.

7:00 p. m.—American Hawaiian Trio, Hale Hooper and Margaret Kernon.

8:00 p. m.—Galanian's Orchestra, Dot Jordan and Glenda Boston.

9:00 p. m.—Yellow Jackets, Pat Lee and Helen McColl.

SATURDAY, APRIL 2

12:00 noon—Paris Inn Cafe Orchestra, Bert Roverra, soloist.

7:00 p. m.—Lloyd Wood's Orchestra and Dick Powers.

8:00 p. m.—California Melody Kings and Ruth Donigan.

9:00 p. m.—Dave Ward and his Yellow Jackets; Jole Lee, Bud Riley, Don Stevens and Helen Turnbull.

SUNDAY, APRIL 3

8:00 p. m.—Greenwich Village Orchestra and Babette Barker, soloist.

9:00 p. m.—Yellow Jackets; Virginia King, accompanied by Mable King; Al Ybarta and Joe Hawley.

Signing off night at 11 o'clock.

Program Published as Submitted by the Station.



GEORGE FRENGER
Announcer

Pasadena, California — 315.6 Meters

KPSN

PASADENA STAR-NEWS
1000 WATTS—950 KILOCYCLES
GEORGE CECIL COWING, Managing Director
GEORGE FRENGER, Program Manager
HERSHEL SATTERFIELD, Engineer-in-Charge
PERCY C. PRYOR, Studio Office
Phone, Wakefield 3111

DAILY EXCEPT SUNDAY—

12:00 to 12:15 p. m.—News Bulletin.

6:00 to 7:00 p. m.—Dinner-time News Report.

WEEK COMMENCING SUNDAY, MARCH 27, 1927

SUNDAY, MARCH 27

10:30 a. m.—Family Altar Service by the United Church Brotherhoods.

11:00 a. m.—Services from the Pasadena Presbyterian Church.

6:00 to 7:00 p. m.—Star-News concert, with Adolf Tandler and the Ensemble.

MONDAY, MARCH 28

8:00 to 9:15 p. m.—Star-News concert, with Adolf Tandler and the Ensemble.

TUESDAY, MARCH 29

8:00 to 9:15 p. m.—Star-News concert, with Adolf Tandler and the Ensemble.

THURSDAY, MARCH 31

8:00 to 9:15 p. m.—Star-News concert, with Adolf Tandler and the Ensemble.

FRIDAY, APRIL 1

8:00 to 9:15 p. m.—Star-News concert, with Adolf Tandler and the Ensemble.

SATURDAY, APRIL 2

8:00 to 9:15 p. m.—Star-News concert, with Adolf Tandler and the Ensemble.

Program Published as Submitted by the Station.

RCA Radiola

plus

**our expert
SERVICE**



RCA
Loudspeaker
100
\$35.00



RADIOLA 20 gives you the tone quality and performance of a high priced set for only \$78. (Less Equipment)

It has a power tube—for volume. It has single control—for simplicity. It is sensitive—for distance. And with all the new features of radio, it is not a new experiment, but a proved and perfected product of RCA.

Hear it, at our store, in competition with any others or let us bring it to your home.

Phone TRinity 0746 for Appointment
in Your Home

Eastman Kodak Stores, Inc.

510 South Broadway

Los Angeles, Calif.



JACK DUCKWORTH
Announcer

Inglewood, California—387 Meters

KMIC

500 WATTS—775 KILOCYCLES

Owned and Operated by JAMES R. FOUCH
Chamber of Commerce Building, Inglewood, Cal.
JACK DUCKWORTH, Announcer

DAILY EXCEPT SUNDAY—

6:00 to 7:00 p. m.—Shopping news, with Victor Electrola Review.

WEEK COMMENCING SUNDAY, MARCH 27, 1927

SUNDAY, MARCH 27—

11:00 a. m. to 12:15 p. m.—Centinella Baptist Church.

MONDAY, MARCH 28

7:00 to 8:00 p. m.—Lambert Sales Co., Courtesy Program with Eddie Hoffman and his Radio Boys—Geraldine Gordon baritone.

8:00 to 9:00 p. m.—City of Inglewood program with KMIC Concert Orchestra.

9:00 to 9:30 p. m.—Geo. M. Sutton courtesy program with Eddie Hoffman and his Radio Boys—Don Miner, tenor; Louise White, soprano.

9:30 to 10:00 p. m.—Studio program.

TUESDAY, MARCH 29

7:00 to 7:15 p. m.—Skinner Mfg. Co. courtesy program.

7:15 to 7:45 p. m.—Reliable Radio Sales & Service Co., courtesy program, with Milt Gardner and his Radio Boys—Larry and Verne Cannon, harmony—Doc Williams, old time songs.

7:45 to 8:00 p. m.—The Little Ant Man.

8:00 to 8:30 p. m.—H. R. McCellen Duco Co., courtesy program, with Martin Wallace Orchestra—Abe Jacobson, Bill Henry, Geo. Thieroy, Harry Von Zell, Jimmy Collins, Neva Negis, warbler.

8:30 to 10:00 p. m.—Studio program.

WEDNESDAY, MARCH 30

7:00 to 7:30 p. m.—Studio program.

7:30 to 8:00 p. m.—Malley-Clint, courtesy program, with Wes Woodford and his Bachelor Four.

8:00 to 8:30 p. m.—Lindburg Studio of Photography, courtesy program, with L. A. R. R. Orchestra or String Quartette, Sherman Hunter, tenor.

8:30 to 10:00 p. m.—Studio program, with Wes Woodford and his Bachelor Four; Geraldine Gordon, baritone; Venician Joy, makers; Louise White, soprano.

THURSDAY, MARCH 31

7:00 to 7:30 p. m.—Studio program.

7:30 to 8:00 p. m.—Ross O. Porter Tire Co., courtesy program, with the Six Syncopetta, Larry and Verne Cannon, harmony; Bill Henry and Helen McColl; Fred Wesley, blues.

8:00 to 8:30 p. m.—Inglewood Furniture Co., courtesy program, with Waterbury's Syncopettes: Jimmie Collins, tenor; Doc Williams, the wandering minstrel of the air; Neva Negis, warbler.

8:30 to 10:00 p. m.—Studio program.

FRIDAY, APRIL 1

7:00 to 7:30 p. m.—Studio program.

7:30 to 8:00 p. m.—Skinner Mfg. Co., courtesy program.

8:00 to 8:30 p. m.—H. R. McCellen Duco Co., courtesy program, with Jack Lempke and his Radio Boys; Geo. and Harry, ukas and harmony; Fred Wesley, blues; Carol Agnew, pianist.

8:30 to 8:45 p. m.—The Little Ant Man.

8:45 to 10:00 p. m.—Studio program.

10:00 to 12:00 p. m.—Inglewood Post No. 166, American Legion Frolic, plenty of fun for all.

SATURDAY, APRIL 2

7:00 to 8:00 p. m.—Studio program; Larry and Verne Cannon, buddies in harmony; Bud Riley, tenor guitar.

8:00 to 9:00 p. m.—Bill Livingston and his Radio Boys; Evie and Peggy, KMIC harmony girls; Neva Negis, warbler.

9:00 to 10:00 p. m.—Studio program; Bill Henry and Dov Williams, the wandering minstrel of the air.

10:00 to ?????—H. R. McCellen Duco Co. Frolic.

Tune in KMTR, Monday, March 28th, 9 to 10 P. M., for
Radio Doings Prize Program

SHEPHERD RADIO SERVICE

Authorized Dealer for

Stromberg-Carlson, Federal Ortho-Sonic Receiving Sets

We specialize in correcting balky receivers. Super-Heterodynes, Infradynes, Roberts, etc., made to perform efficiently.

Transformers Matched, Coils Balanced

Phone Us Your Troubles. Our Service Will Please

Batteries Changed, Tubes Reactivated. Work Called for and Delivered

GRanite 7482

7562 Sunset Boulevard

Hollywood, California

Spaulding Fibre and Bakelite

*C
h
i
c
a
g
o*

*H
i
g
h

T
e
n
s
i
o
n*

Clapp & LaMoree

Will Move Into Their Own Building

*1325 San Julian Street
Los Angeles, Calif.*

April 1st .

*Larger Quarters, More Stock. Even Better
Service and a New Telephone Number*

*S
w
i
t
c
h
e
s*

*M
i
c
a

C
o*

Irvington Hope Dumore E. E. E. Co.

Santa Monica, California—238 Meters



TOM MITCHELL
Announcer

KNRC

1000 WATTS CAPACITY
Owned and Operated by KEIRULFF & RAVENS-CROFT COMPANY
Municipal Auditorium, Ocean Park, Santa Monica, Calif. Phone Santa Monica 63-101.
TOM MITCHELL, Studio Manager and Announcer.
C. B. JUNEAU, Transmission Engineer.
"The Station with a Smile"

DAILY EXCEPT SUNDAY—

6:00 to 7:00 p. m.—Club Casa Del Mar organ recital. Remote control.
7:00 p. m.—Merchants Review.
10:00 to 11:00 p. m.—Club Casa Del Mar Orchestra. Remote control.
11:00 to 12:00 p. m.—La Monica Ball Room Orchestra.

DAILY EXCEPT MONDAY—

8:00 to 9:00 p. m.—Band Concert.
2:30 p. m.—Band Concert.

WEEK COMMENCING SUNDAY, MARCH 27, 1927

SUNDAY, MARCH 27

10:45 to 11:45 a. m. — Pilgrim Lutheran Church services.
6:15 to 7:00 p. m.—Pilgrim Lutheran Church services.
7:00 to 8:00 p. m.—Club Casa Del Mar, organ concert by Julius K. Johnson.
9:00 to 10:00 p. m.—Club Casa Del Mar. Julius K. Johnson, organist, and Club Casa Del Mar Orchestra.
10:00 to 11:00 p. m.—La Monica Ballroom Orchestra.

MONDAY, MARCH 28

2:00 to 2:30 p. m.—Shopping Tour conducted by Margaret Macdonald Shontz.
4:00 to 4:45 p. m. — Smiling Circle with Brother Tom.
8:00 to 10:00 p. m.—Main studio program, featuring the Black and Tan Orchestra. Al Flannigan, tenor.

TUESDAY, MARCH 29

1:30 to 2:30 p. m.—Ort Mace and his Rendezvous Ballroom Orchestra.
4:00 to 4:45 p. m. — Smiling Circle with Brother Tom.
9:00 to 10:00 p. m.—Main studio program, featuring the California Dons Orchestra, Marjorie Bechtel, soprano, and Albert Broad, tenor, accompanied by Irma Read

WEDNESDAY, MARCH 30

2:00 to 2:30 p. m.—Shopping Tour conducted by Margaret Macdonald Shontz.

4:00 to 4:45 p. m. — Smiling Circle with Brother Tom.
9:00 to 9:30 p. m.—Club Casa Del Mar.
9:30 to 10:00 p. m.—Broadcasting of the Fights, from Ocean Park Arena, through the courtesy of the Ocean Park Athletic Club.

THURSDAY, MARCH 31

4:00 to 4:45 p. m. — Smiling Circle with Brother Tom.
9:00 to 10:00 p. m.—Main studio program, featuring John David Benil and his assisting artists.

FRIDAY, APRIL 1

2:00 to 2:30 p. m.—Shopping Tour, conducted by Margaret Macdonald Shontz.
4:00 to 4:45 p. m. — Smiling Circle with Brother Tom.
9:00 to 10:00 p. m.—Main studio program, featuring Los Angeles Railway Orchestra.

SATURDAY, APRIL 2

4:00 to 4:45 p. m. — Smiling Circle with Brother Tom.
9:00 to 10:00 p. m.—Main studio program, featuring Virginia Depp and Betty Daud, novelty singers; Kathleen Williamson, Blues singer, accompanied by Eleanor Swall and fourteen strings of harmony, by Eddie Mills.
12:00 to 1:00 a. m.—La Monica Ballroom Orchestra.

Avalon, California—211.1 Meters



Major Lawrence Mott
Announcer

KFWO

THE ISLAND STATION
Power 250 Watts—Western Electric Equipment
"Katalina for Wonderful Outings"
MAJOR LAWRENCE MOTT, Owner-Operator
MISS FRANCES HEWITT, Studio & Program Dir.
"The Isle With a Smile"

WINTER SCHEDULES AT KFWO

The Mott Station at Catalina Island, California
(in Effect Week of Sept. 20th)

DAILY EXCEPT MONDAY—

12:30 to 1:30—Hotel St. Catherine Orchestra.
8:30 to 8:00—St. Catherine Orchestra.

DAILY EXCEPT MONDAY, THURSDAY AND SUNDAY—

6:00 to 6:30—Studio..

MONDAYS

Silent.

TUESDAYS

5:30 to 6:00 p. m.—Miss Hewitt's Golden Hour.
6:00 to 8:00 p. m.—Studio

WEDNESDAYS

8:00 to 9:00 p. m.—Studio Program
9:00 to 12:00 Midnight—Overseas

THURSDAYS

8:00 to 9:00 p. m.—Studio Program

FRIDAYS

5:00 to 6:00 p. m.—Miss Hewitt's Golden Hour.

6:00 to 6:30 p. m.—Wrigley Chimes.

SATURDAYS

3:00 to 4:30 p. m.—Rebroadcast of KNX.
9:15 to 10:00 p. m.—Studio.

SUNDAYS

5:00 to 6:00 p. m.—Miss Hewitt's Golden Hour.

6:00 to 6:30 p. m.—Wrigley Chimes

8:00 to 9:15 p. m.—Lobby Concert.

Litur Electrona used during all programs.

5 Tube Falck



*Beautiful
Mahogany
Console*



Plug in your light socket as you would your electric iron. No batteries, no acid, no muss, no fuss. Operates without aerial. One dial control. Something everybody wants, at a low cost. Cash credit for your old set.

Phone VE. 9589

**For Home
Demonstration**



EASY TIME PAYMENTS

FLETCHER

RADIO MUSIC CO.

**4705 S. Vermont Ave. VE. 9589
Los Angeles**

The Falck NO-BATTERY RADIO

for

**TONE
BEAUTY
ECONOMY
SIMPLICITY
SELECTIVITY
PERMANENCE**

THE new Falck No-Battery Radio is always ready to entertain you. No battery trouble or expense of any kind. Unequaled by many sets at twice the price. Ask to hear the Falck at any authorized Falck dealer, or phone MUTuel 1724 for free demonstration in your home.

**FALCK RADIO SALES CO.
1260 W. Second St., Los Angeles**

\$150 complete, no extras





BOB BEDDOME
Announcer

Venice, California—208 Meters

KFVD

1440 KILOCYCLES—500 WATTS

McWHINNIE ELECTRIC CO., VENICE BALLROOM
Venice, Cal. Phone 65969
BOB BEDDOME, Manager

DAILY EXCEPT SUNDAY—

- 9:00 to 11:00 a. m.—Music and shopping news.
- 11:00 to 11:30 a. m.—Mary Elizabeth Garden.
- 5:30 to 7:00 p. m.—Music and shopping guide.
- 10:00 to 12:00 p. m.—Cush Branch and orchestra Venice ballroom.

WEEK COMMENCING SUNDAY, MARCH 27, 1927

SUNDAY, MARCH 27

6:00 p. m.—Cush Branch and Orchestra from Venice Ballroom.

MONDAY, MARCH 28

8:00 to 9:00 p. m.—Hal Denny and De Luxe Orchestra; Bud Russel and Uke.

9:00 to 10:00 p. m.—Clyde Pearson, soprano; Fred Wesley, Al Conklin, piano; Theo. Schaeffer, tenor.

12:00 midnight to 2:00 a. m.—Midnight Frolic from Tommy Jacob's Ship Cafe.

TUESDAY, MARCH 29

8:0 to 9:00 p. m.—Ansley Graham, tenor; Lallah Fulton, concert pianist; Dale Fulton, violinist.

9:00 to 10:00 p. m.—Roy Davis, whistler, Geraldine Barnett, soprano; Billy McCabe, tenor; Eugene Raymond, baritone.

WEDNESDAY, MARCH 30

12:30 p. m.—Lions Club of Venice.

4:00 to 5:00 p. m.—Children's Hour, con-

ducted by Ursula March Largey.

8:00 to 9:00 p. m.—Studio program.

9:00 to 10:0 p. m.—Lyman Weed, baritone; Nina Frey, soprano; Harry Von Zell, baritone; Geo. Thiroux.

THURSDAY, MARCH 31

7:30 to 8:30 p. m.—Basketball.

8:30 to 9:00 p. m.—Bob Davies, Welch baritone; Sally J. Shull, pianist.

9:00 to 10:00 p. m.—Ensemble Conservatory of Music.

FRIDAY, APRIL 1

4:00 to 5:00 p. m.—Children's Hour

8:00 to 9:00 p. m.—Marbelite Corp of America courtesy program.

9:00 to 10:00 p. m.—L. A. Railway Hawaiian Quartet and vocal soloists.

SATURDAY, APRIL 2

1:00 to 2:00 p. m.—Harry Judson, Addie Carison, Walter Lyon, Al Conklin and others.

Program Published as Submitted by the Station.

MODERN "B" COMPACT

Modern in Every Sense of the Word



Ample output to take care of any set using from one to seven tubes, including power tube. Hermetically sealed against moisture; small in size.

Built with Tube special type heavy duty condensers throughout. Does not hum.

Price \$35

Complete with Raytheon Tube

Exclusive Wholesale Distributors

YALE RADIO ELECTRIC CO.

1111 Wall St.

LOS ANGELES

Westmore 3351

OUR EXCEPTIONAL OFFER

*Get Two Great Magazines For Almost
the Price of One!*

SAVE \$2.00

RADIO NEWS—The National Radio Monthly
with the largest circulation and following of
any Radio publication in the world—

or
SCIENCE AND INVENTION

or
AMAZING STORIES

Regular Price \$2.50

and

RADIO DOINGS—The Leading Pacific Coast
Radio Weekly — the Radio authority of the
Pacific Coast—

Regular Price \$3.00

These leaders in their respective fields—the great National
Monthly, Radio and Scientific Magazines and the great
Pacific Coast Weekly—

BOTH NOW FOR \$3.50

You Can't Afford to Pass This Offer By

Attach Money Order, Check or Currency to the Coupon and Mail to Us
Right Now

RADIO DOINGS,
407 E. Pico Street,
Los Angeles, Calif.

*Or Conger & Moody,
Sharon Bldg., San Francisco, Calif.*

Send me **RADIO DOINGS** and "RADIO NEWS," **SCIENCE & INVENTION** or **AMAZING STORIES** for one year. I enclose \$3.50.

Name.....

Address.....

City and State.....

(Specify NEW or RENEWAL)

R-1



"HAL" C. NICHOLS
Announcer

Long Beach, California—233 Meters

KFON

1250 KILOCYCLES—750 WATTS

NICHOLS & WARINNER, INC.

Studio 211 Jergins Trust Bldg. Phones 617-19, 614-80

Business Office, 212 Jergins Trust Bldg.

Phones: 617-19, 614-80

"Where Your Ship Comes In"

DAILY EXCEPT SUNDAY—

- 9:30 to 10:15 a. m.—Pacific Coast Club organ.
 10:15 to 10:30 a. m.—"Devotion Period."
 10:30 to 11:30 a. m.—Physiology of Beauty, Georgia O. George
 11:30 a. m. to 12:00 noon—Press-Telegram news.
 12:00 noon—Lost and found announcements.
 12:00 to 12:30 p. m.—Musical program.
 4:00 to 4:30 p. m.—Press-Telegram Late News.
 4:30 to 6:00 p. m.—KFON Concert Orchestra.
 6:00 to 6:15 p. m.—Request Program by Clarence and Doris.
 6:15 to 7:00 p. m.—KFON Concert Orchestra.
 10:00 to 11:00 p. m.—San Pedro Merchants musical program.
 11:00 to 12:00 p. m.—Majestic Ball Room Orchestra by remote control

WEEK COMMENCING SUNDAY, MARCH 27, 1937

SUNDAY, MARCH 27

- 11:00 to 12:30 p. m.—Church of the Nazarens, by Rev. L. A. Reed.
 1:30 to 2:30 p. m.—Musical program presented by Wm. Conrad Mills.
 4:00 to 5:00 p. m.—Vesper Hour.
 5:00 to 6:00 p. m.—KFON Concert Orchestra, sponsored by Long Beach Business Men.
 7:00 to 7:45 p. m.—Fountain Club Cafe Orchestra.
 7:45 to 9:00 p. m.—Service from the First Church of Christ, Scientist.
 9:00 to 12:00 p. m.—"Everybody's Night"—amateurs and professionals.
 1:30 to 2:00 p. m.—Wilshire Ionoca Co. program, featuring Clarence and Doris.
 2:00 to 2:30 p. m.—Department of Numerology.
 7:00 to 7:30 p. m.—Texas Cowboys in old time dance music.
 9:00 to 10:00 p. m.—Pacific Coast Club Orchestra, by remote control.

THURSDAY, MARCH 31

- 12:30 to 1:00 p. m.—Beauty Talk.
 2:00 to 2:30 p. m.—Health and Efficiency Dr. Elmer S. Clark.
 7:00 to 8:00 p. m.—Studio program.
 9:00 to 10:00 p. m.—Shell Oil Company's Orchestra.

FRIDAY, APRIL 1

- 12:00 to 12:30 p. m.—Studio program.
 1:00 to 1:30 p. m.—Wilshire Ionoca Company, featuring Clarence and Doris.
 2:00 to 2:30 p. m.—Department of Numerology.
 7:00 to 7:30 p. m.—Church of Christ, by Rev. Earnest Beam.
 7:30 to 7:45 p. m.—"A Selma Sizer program."
 7:45 to 8:00 p. m.—"Lucky Jim" Investment Chat, by Seaboard Bond & Mortgage Co.
 9:00 to 10:00 p. m.—Caskill Manufacturing Co., and Missman Radio Co. program.
 11:00 to 1:00 a. m.—Elks' Frolic, Lodge No 886.

SATURDAY, APRIL 2

- 1:30 to 2:30 p. m.—Fountain Club Cafe Orchestra.
 7:00 to 8:00 p. m.—Pacific Coast Club Orchestra.
 9:00 to 10:00 p. m.—The Minstrel Show.
 12:00 to 12:30 p. m.—Studio program.

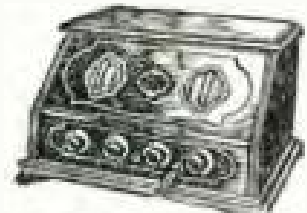
Radiola 20

COMPLETE WITH ALL TUBES,
BATTERIES AND CONE SPEAKER

PRICE \$115.55

HARRY W. HARRISON, INC.

848 South Flower Street, Los Angeles, Cal.



Less Accessories \$78.00

Phone TRinity 9777 for Efficient Radio Service. Drive In, Free Parking

SERVICE DIRECTORY

There is a Service Man in Your Neighborhood. Call or see him.

SOUTHEAST	S E R V I C E	SOUTHWEST
6120 South Broadway TH. 0224 <small>(Equipped to handle any job)</small> DE HOOG BROS. RADIO COMPANY		Cor. Figueroa at Vernon AX. 8382 CHAPMAN-HOUSE SALES CO.
WILSHIRE		LARCHMONT
214 South Western Ave. WA. 5413 HENSEL ELECTRIC STORE		218 North Larchmont GL. 7298 SMITH-SCOTT CO.
LONG BEACH		INGLEWOOD
430 American Ave. Phone 653-171 RIALTO RADIO CO.		114 Market St. Phone 993 RELIABLE SALES & RADIO SERVICE CO.
HOLLYWOOD		? ? ? ? ?
7406 Melrose ORegon 4702 <small>(Accurate Service On All Types of Sets)</small> Wesholly Radio Service C. V. (Jack) Schiefer	RESERVED FOR YOU CALL WEstmore 1401 FOR PARTICULARS	

Those listed on this page are competent and efficient Radio Technicians and are recommended to you for your patronage.



TOM SEXTON
Announcer

San Diego, California—245.8 Meters

KFSD

1000 WATTS—1220 KILOCYCLES
AIRFAN RADIO CORPORATION
U. S. Grant Hotel, 326 Broadway, San Diego. Main 8681
H. C. ROGERS, President and General Manager
TOM SEXTON, Announcer

"Kiss From San Diego"

DAILY EXCEPT SUNDAY—

6:00 to 7:00 p. m.—Nightly musical review.
10:00 to 11:00 p. m.—Harvey Ball and his U. S. Grant Hotel Orchestra

DAILY EXCEPT SUNDAY AND MONDAY—

9:00 to 10:00 p. m.—La Bohemian Dance Program.

WEEK COMMENCING SUNDAY, MARCH 27, 1927

SUNDAY, MARCH 27—

3:00 to 4:00 p. m.—Temple service of the Theosophical University.

MONDAY, MARCH 28

7:00 to 8:00 p. m.—Studio hour.
8:00 to 9:00 p. m.—First Unitarian Church program, Howard B. Baird.
9:00 to 10:00 p. m.—Mixed musical program.

TUESDAY, MARCH 29

7:00 to 8:00 p. m.—Studio hour.
8:00 to 9:00 p. m.—Union Title Company "Classic Hour" program.
9:00 to 10:00 p. m.—Mixed musical program.

WEDNESDAY, MARCH 30

7:00 to 7:30 p. m.—Courtesy program by Wiltshire's Ionaco Company.

7:30 to 8:30 p. m.—Concert program furnished by the Theosophical University.

8:30 to 9:30 p. m.—Request Program.

9:30 to 10:00 p. m.—Request Program.

THURSDAY, MARCH 31

7:00 to 8:00 p. m.—Police program, dance music and concert music.
8:00 to 9:00 p. m.—Mixed musical program.

FRIDAY, APRIL 1

7:00 to 8:00 p. m.—Studio hour.
8:00 to 9:00 p. m.—Studio program.

SATURDAY, APRIL 2

7:00 to 8:00 p. m.—San Diego Senior High School program.
8:00 to 9:00 p. m.—Mme. de Beauviere. "Franco-American hour."

Program Published as Submitted by the Station.

Tune in KMTR, Monday, March 28, 9 to 10 P. M., for Radio Doings Prize Program

TRinity 2914



24

Years In
Business

HOLD DISTANCE!

WITH

Philco Socket Power

SOLD AT

NEWBERY ELECTRIC CORP.

726 South Olive St.

TRinity 2914



Los Angeles, Cal.

WE WILL SEND

OUR COMPLETE 7-TUBE SUPER KIT, including Trans-
trom Intermediate Transformers, Drilled Panels and Full
Instructions for Assembling, for only \$85.00, prepaid to
any address.

*If you are not interested in Selectivity, Sensitivity and Distance,
don't answer this ad!*

SIERRA RADIO LABORATORIES

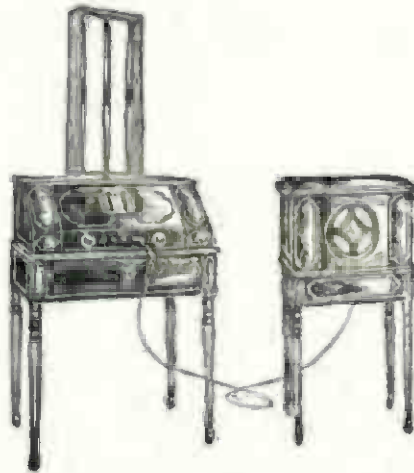
318 W. 8th St.

LOS ANGELES, CALIF.

VAndike 6464



RCA LOUD-SPEAKER 104—
Power speaker with battery eliminator—clear at a whisper and clear at the volume of a brass band!



RADIOLA 28—
Eight tube super-heterodyne, with loop (adaptable for antenna). Tuned with a single finger!

The Radiola 28 and Loudspeaker 104 is a combination that exceeds anything you can imagine! Let one of these authorized dealers prove it to you:

LOS ANGELES

Beverly Hills

CRAWFORD'S RADIO-MUSIC
445 Beverly Drive
OXford 6801

Hollywood

HETZEL COMPANY
7915 Santa Monica Blvd.
GRanite 5874
HOLLYWOOD Music Co.
6019 Hollywood Blvd.
HOLLYWOOD 0364

Lincoln Heights

FRANK GRAVES SASH, DOOR
& MILL Cn., HOW. DEPT.
2012 Pasadena Ave.
CApitol 2071

Southwest

C & G ELEC. & RADIO Co.
1501 W. Santa Barbara,
at Dalton
VERmont 5205
L. A. DUNCAN
2891 W. Pico St.
EMpire 1141

TECH. LAB. N. E. BROWN
6805 S. Western Ave.
THornwall 0270

Hollenbeck Heights
PHONOGRAPH REPAIR SHOP
(N. E. Worobieff)
1826 E. First St.
ANGelus 6349

Southeast
CENTRAL ELECTRIC Co.
3802 Central Ave.
HUmbolt 2337

Wilshire
WOLFE RADIO Co.
543 S. Western Ave.
WASHington 5711

Downtown
THE ELECTRICAL APPE-
ANCE SHOP
336 S. Broadway
TUcker 2932
HARRY W. HARRISON
848 S. Flower St.
TRinity 9777
MARTIN MUSIC Co.
734 S. Hill St.
TRinity 9621

ALHAMBRA

FRED B. GILLENWATER
RADIO STUDIO
127 W. Main St.
Alhambra 2032

BELL

BAKER AVE. ELECTRIC Co.
910 Baker Ave.
DElaware 1871

BELLFLOWER

W. W. WERNER
517 Somerset Ave.
Downey 7265

DOWNEY

DARNELL ELECTRIC SHOP
136 W. Second St.
Downey 42230

EL MONTE

COAST RADIO Co.
308 W. Main St.
El Monte 110

GLENDALE

J. A. NEWTON ELEC. Co.
154 S. Brand Blvd.
Glendale 240

PASADENA

LEE RADIO SHOP
922 E. Colorado St.
Terrace 1420

RCA-Radiola
MADE BY THE MAKERS OF RADIOTRONS



CURTIS PECK
Announcer

San Francisco, California—428.3 Meters

KPO

1000 WATTS—700 KILOCYCLES
HALE BROTHERS AND THE CHRONICLE
J. W. LAUGHLIN, Managing Director
MRS. FREDERICK CROWE, Program Director
ALBERT J. HODGES, Technical Director
Phone Kearney 5777

"The Voice of San Francisco"

DAILY EXCEPT SUNDAY—

- 6:45, 7:15 and 7:45 a.m.—Daily health drill by Hugh Barrett Dobbs.
10:30 a.m.—"Ye Towne Crier."
10:45 a.m.—Cooking Hints.
12:00 noon—Time signals and Scripture reading.
1:00 to 2:00 p.m.—Rudy Seiger's Fairmont Hotel Orchestra.
3:30 to 5:30 p.m.—Palace Hotel Concert Orchestra.
5:30 to 6:15 p.m.—Children's Hour.
6:15 to 6:30 p.m.—"Ye Towne Crier."
6:30 to 7:00 p.m.—States Restaurant Orchestra.
7:00 to 7:30 p.m.—Rudy Seiger's Fairmont Hotel Orchestra.
7:30 to 8:00 p.m.—Silent.
10:00 to 11:00 p.m.—Dance Program.

WEEK COMMENCING SUNDAY, MARCH 27, 1927

- SUNDAY, MARCH 27**
9:45 to 10:45 a.m.—Un denominational and non-sectarian church service. Uda Waldrop at the organ.
10:45 a.m.—"Ye Towne Crier." giving the United States weather forecast and general information.
2:30 to 4:30 p.m.—Baseball Game, Recreation Park.
6:00 to 6:30 p.m.—States Restaurant Orchestra, Waldemar Lind, director.
6:30 p.m.—"Ye Towne Crier." giving general information.
6:35 to 8:35 p.m.—Palace Hotel Concert Orchestra, Cyrus Trobde, director.
8:35 to 10:00 p.m.—Rudy Seiger's Fairmont Hotel Concert Orchestra.
10:00 to 12:00 p.m.—John Wolohan and his Californians at the Trianon Ballroom.

MONDAY, MARCH 28

- 8:00 to 8:10 p.m.—Chamber of Commerce talk on "Industrial San Francisco," by Capen A. Fleming, director, Industrial Department.
8:10 to 8:25 p.m.—Book reviews by Harold

- A. Small of the Chronicle.
8:25 to 9:00 p.m.—Bridge Lesson No. 23.
9:00 to 10:00 p.m.—Studio program by Neapolitan Quartette.
11:00 to 12:00 p.m.—KPO's Variety Hour.

TUESDAY, MARCH 29

- 8:00 to 9:00 p.m.—"Uda Waldrop Hour." featuring Uda Waldrop, KPO's official organist.
9:00 to 10:00 p.m.—Studio program.

WEDNESDAY, MARCH 30

- 8:00 to 9:00 p.m.—Program by the Atwater-Kent Artists, under the auspices of Ernest Ineold, Inc.
9:00 to 10:00 p.m.—Studio program.

THURSDAY, MARCH 31

- 8:00 to 10:00 p.m.—Studio program.

FRIDAY, APRIL 1

- 8:00 to 10:00 p.m.—Walter Krausgrill's Or-

SATURDAY, APRIL 2

- 6:30 to 7:30 p.m.—States Restaurant Orchestra, Waldemar Lind, director.
8:00 to 10:00 p.m.—Palace Hotel Rose Room Orchestra.

Program Published as Submitted by the Station.



Technical Laboratory of

N. E. BROWN

6805 S. Western Ave. Phone THornwall 0270

BUILT THE EQUIPMENT—

For the 500-Watt Broadcasting Station KMIC

We build them of any desired power.

The laboratory is equipped with lathes, drill presses, punch presses, special winding machines, special high voltage and current sets for testing, radio and audio oscillators, gain meters, etc., together with the finest collection of precision meters available and we "Know How" to use them.

Remote Control Amplifiers, Motor Generator Sets and any type of Portable or Ship Transmitter, also High Class Receivers for any purpose.

Special Transformers of any Type, Voltage and Power.

Special Magnetic Steels, Magnetic and Resistance Wires, Repairs and adjustments of any equipment. **WHAT ARE YOUR NEEDS?**

NOW THE **SUPREME R-F 5** IS SOLD
FACTORY DIRECT TO YOU
5-Tube Console Complete



\$59

Built-in speaker, large tubes, 100 A. H. Rubber Case Battery even the inside aerial is included—nothing else to buy.

Selectivity :: Quality :: Distance

New Modified S. L. F. condensers allow ample separation of low wave lengths and gives absolute selectivity on all stations. Using Kellogg's laboratory grade transformers assures you of tone perfection, and for distance the utmost in sensitivity has been achieved through proper design of condensers and inductance.

Made of Finest Parts Obtainable

The Supreme—Made of the finest of material such as Kellogg, Yazley, Carter, C. R. L., Benjamin, Bakelite coils.

Order Your Set Today

and you'll say, like everyone else that hears the Supreme, "That's the best receiver I ever heard—it's wonderful." It's simply not equalled for purity of tone or fidelity of reproduction. Remember every part is guaranteed to you—you take no chances.

THE PATTERSON FACTORY TO YOU SALES PLAN

puts a guaranteed \$155 console, 5-tube receiver in your home for cash at about \$35 less than the actual wholesale price. Volume production is the answer.

Patterson Radio Manufacturing Co.

Established 1921

239 S. Los Angeles St.—VA. 8139

Los Angeles, Calif.



Howard I. Milholland
Announcer

Oakland, California—361.2 Meters

KGO

4000 WATTS—830 KILOCYCLES
PACIFIC COAST STATION, GENERAL ELECTRIC CO.
Phone Fruitvale 5080

DAILY EXCEPT SUNDAY—

11:30 a. m. to 1:00 p. m.—Hotel Leamington concert.

DAILY EXCEPT SATURDAY AND SUNDAY—

1:30 and 6:00 p. m.—Stock and weather reports. Base ball scores.

6:00 to 6:55 p. m.—Bem's Little Symphony Orchestra.

6:55 to 7:30 p. m.—Weather and stock reports.

WEEK COMMENCING SUNDAY, MARCH 27, 1927

SUNDAY, MARCH 27

11:30 a. m.—Trinity Episcopal Church service, San Francisco; Rev. Charles P. Deems, rector. Benjamin S. Moore, organist.

6:30 to 7:30 p. m.—Concert by Bem's Little Symphony Orchestra, Hotel Whitcomb, San Francisco.

7:30 p. m.—Weather Bureau report.

7:35 p. m.—Trinity Episcopal Church service, San Francisco; Rev. Charles P. Deems, rector. Benjamin S. Moore, organist.

9:00 to 10:00 p. m.—Concert by Bem's Little Symphony Orchestra, Hotel Whitcomb, San Francisco.

MONDAY, MARCH 28

4:00 to 5:00 p. m.—California Federation of Women's Clubs.

5:30 to 6:00 p. m.—Aunt Betty (Ruth Thompson) stories; KGO Kiddies' Klub.

Silent Night.

TUESDAY, MARCH 29

5:00 p. m.—"Mental Measurements" lectures by Dr. Virgil E. Dickson, University of California.

8:00 to 9:00 p. m.—(Oak. studio) — The Pilgrims. Eveready program by National Carbon Company.

9:00 p. m.—Joseph Henry Jackson: "Chats About News Books."

9:20 p. m.—Surprise broadcast.

WEDNESDAY, MARCH 30

8:00 p. m.—(S. F. studio)—Farm program, co-operating with U. S. Dept. of Agriculture. California State Dept. Agriculture, California Farm Radio Council, and the California Dairy Council. Music by W. O. W. Male Trio.

8:20 p. m.—An interview with the Agricultural Economist.

8:30 p. m.—W. O. W. Male Trio.

8:40 p. m.—Address, "Recreational Functions of California's Forests," Charles C. Dunwoody, director, Department of Conservation, California Development Association, and National Chairman, Conservation Committee of the American Legion.

9:00 p. m.—W. O. W. Male Trio.

THURSDAY, MARCH 31

5:00 to 6:00 p. m.—George W. Ludlow, "Friend to Boys."

8:00 p. m.—(Oakland studio)—"What Became of Parker," a farce-comedy in four acts, by Maurice Hageman; pre sented by the KGO Players, Wilda Wilson Church directing. Music, Arion Trio.

10:00 p. m. to 12:00 midnight—Adele Steinbeck's Orchestra, Paradise Ball Room, Oakland.

FRIDAY, APRIL 1

11:10 a. m.—Providence Penny, Homemaking talk.

5:30 p. m.—Day-Bay-O, children storyteller from Lind O. Health.

8:00 p. m.—(Oakland studio)—Program of Old Favorites, by the International Four, and Gino Severi, violinist.

SATURDAY, APRIL 2

8:00 p. m.—"Weekly Sport Review" by Al Santoro.

8:15 to 9:15 p. m.—Program from Hotel Leamington, Oakland.

9:15 p. m. to 1:00 a. m.—Dance music Wilt Cunzendorfer's Hotel Whitcomb Band, San Francisco. Rose Lind, contralto.



Chas. E. Gabrielle, Jr.
Announcer

Oakland, California—508.2 Meters

KLX

500 WATTS—508.2 Meters
OAKLAND TRIBUNE RADIOPHONE
Phone, Lakeside 6015

"Oakland, Where Rail and Water Meet"

DAILY EXCEPT SUNDAY—

7:00 to 7:30 p. m.—News broadcast.

SUNDAY, MARCH 27

10:30 a. m.—Martha Lee.

8:00 to 9:00 p. m.—Special program.

9:00 to 10:30 p. m.— Weekly meeting of Lake Merritt Dufks.

WEDNESDAY, MARCH 30

10:30 a. m.—Martha Lee.

6:30 to 7:00 p. m.—Athens Athletic Club dinner concert.

8:00 to 9:00 p. m.—Educational program.

9:00 to 10:00 p. m.—Special program.

FRIDAY, APRIL 1

10:30 a. m.—Martha Lee.

8:00 to 9:45 p. m.—Wasetrn Auto Supply program.

9:45 to 10:30 p. m.—Athens Athletic Club Orchestra.

YOUR NEIGHBORHOOD DEALER

ADVERTISING SERVICE

BOSCH AND BREMER TULLY

Mr. RADIO DEALER!

Here Is Your
Space For Next
Week — Our New
1/6th Page, Designed
For Your Needs

For Rates Phone
WEStmore 1401

Announcing—

The New COUNTERPHASE POWER EIGHT

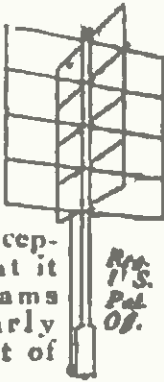
With 5 Stages of Radio Frequency.
The Most Selective Set Yet
Developed

H. A. EVEREST
1032 N. Ogden Dr., Hollywood, Cal.
Phone GRANite 9915
Nightly Demonstrations

Tune in KMTR, Monday, March 28, 9 to 10 P. M., for Radio Doings Prize Program

*Whatever else
might be said—*

No genuine Radiophile but who admits the Gilcrest-Cross Non-directional Aerial is designed on principles of correct Radio Reception. Fact that it arrests programs perpendicularly eliminates most of



Reg. U.S. Pat. Off.

the interference of earth radiation and electric wires and steel rails, so apt to mess up horizontal deflection. Thousands of users wouldn't trade it. Sold on a money-back guarantee



24 inch - - - \$9.00
30 inch - - - 10.00

Prepaid anywhere

GILCREST & QUINN

2062 MARKET STREET SAN FRANCISCO

Los Angeles Distributors:

W. B. HARRIS, 4113 West Washington Blvd.

Burgess Batteries Cunningham Tubes

FIGUEROA RADIO SHOP RADIOTRICIANS KOLSTER

Crosley Sets and Speakers
Expert Service on All Makes of Sets
TUcker 6763 747 S. Figueroa St.

See Special Offer Page 61

GET \$1 DISTANCE Amazing Discovery for Any Radio

Who would your radio programs in a few total stations when the expensive concert, dance music and lectures of hundreds of big cities are ready for you? With every order for our tragically "The Distance Getter" we include FREE our wonderful new Distance Transformer. Tune your set according to our special instructions and presto—take the distant stations real live!

SATISFACTION GUARANTEED
Your money instantly refunded if you are not satisfied. The attachment furnished FREE with the "Distance Getter" does its work the price. Guarantee of Chicago writing. "Saves beyond all expectations. Gets through noise like a knife."

MAIL COUPON TODAY

Houston Laboratories,
4524 Madison St., Dept. 232 Chicago

Send me "The Distance Getter" postpaid.
Enclosed find \$1 (N. O., stamps or check).

Send C. O. D., plus small postage added.

Name.....
Address.....
City..... State.....





"MAC"

San Francisco, California—268 Meters

KFRC

Owned and Operated by Don Lee,
California Distributor for Cadillac Motor Car.
50 WATTS—1130 KILOCYCLES
LANSING TEVIE, Manager
HARRISON HOLLIFAY, Station Master
"Keep Forever Radiating Cheer"

DAILY EXCEPT SUNDAY—

7:00 to 8:00 a. m.—Breakfast Concert.
10:00 to 11:00 a. m.—Sherman, Clay & Co. concert.
11:30 a. m. to 12:00 noon—Amateur Tryouts.
12:00 to 2:00 p. m.—Harkness' Mark Hopkins Orchestra.
4:00 to 5:30 p. m.—Harkness' Mark Hopkins Orchestra.
5:30 to 6:25 p. m.—"Mac" and his gang.
6:30 to 7:00 p. m.—Cecilian Trio.

WEEK COMMENCING SUNDAY, MARCH 27, 1927

SUNDAY, MARCH 27

5:00 to 6:00 p. m.—Twilight Recital with Norman Garrett, mezzo soprano, and Jeanette Shearer, clarinetist.
6:00 p. m.—Stage and Screen and Police reports.
6:30 to 8:30 p. m.—Harkness' Mark Hopkins Concert Orchestra.

MONDAY, MARCH 28

11:00 to 11:30 a. m.—Household Hints by Mary Lewis Haines of The Call
6:00 to 6:25 p. m.—Jo Mandel and his Pep Band of the Lido Cafe.
6:25 to 6:30 p. m.—Stage and Screen and Police Reports.
7:00 to 7:30 p. m.—Western Motors Hawaii.
8:00 to 10:00 p. m.—Blue Monday Jamboree, with detective story by A. J. Kane, ans.
Mac's Haywire Orchestra, and others.
10:00 to 12:00 p. m.—Eddie Harkness' Mark Hopkins Dance Orchestra; intermissions by Ronald Jonson, tenor, and Marjorie Primley, pianist.

TUESDAY, MARCH 29

11:00 to 11:30 a. m.—"Doings of Dorothy."
6:25 to 6:30 p. m.—Stage and Screen and Police Reports.
7:00 to 7:30 p. m.—Russell Colvin Instrumental Trio with Dorothy Fletches, soprano.
8:00 to 8:40 p. m.—KFRC Radio Movie Club with Bill Hawley and "Puss" Donahoo.
8:40 to 8:50 p. m.—"Topics of the Night and Day" by Professor Herman Schnitzel.
8:50 to 12:00 p. m.—Eddie Harkness' Mark Hopkins Dance Orchestra; intermissions by Ben Burman, tenor; Peggy MacDonald and Cressy Ferris, pianists.

WEDNESDAY, MARCH 30

11:00 to 11:30 a. m.—Household Hints by Mary Lewis Haines of The Call.
6:25 to 6:30 p. m.—Stage and Screen and Police Reports.
7:00 to 7:30 p. m.—"Puss" Donahoo and his orchestra.
8:00 to 10:00 p. m.—Studio program with KFRC Trio, and June McClelland, mezzo-soprano; Gertrude Zimet, pianist, and John Sheehan, tenor.

10:00 to 12:00 p. m.—Eddie Harkness' Mark Hopkins Dance Orchestra; intermissions by Gertrude Tracy, soprano, and Hazel McDaniels, pianist.

THURSDAY, MARCH 31

11:00 to 11:30 a. m.—"Doings of Dorothy."
6:25 to 6:30 p. m.—Stage and Screen and Police Reports
7:00 to 7:30 p. m.—Western Motors Trio, directed by Vinton La Ferrara.
8:00 to 9:00 p. m.—Mona Motor program, featuring Mona Motor Helody Maids, Wellington Mack, tenor, and others.
9:00 to 10:00 p. m.—Organ recital by Theodore Strong at the console of the Aeolian Duo-Art residence pipe-organ.
10:00 to 12:00 p. m.—Eddie Harkness' Mark Hopkins Dance Orchestra; intermissions by Ronald Jonson, tenor, and Marjorie Primley, pianist

FRIDAY, APRIL 1

11:00 to 11:30 a. m.—Aunt Martha's Hints to Home-Makers.
11:30 to 11:40 a. m.—Chat with Victor, chef of Hotel Mark Hopkins.
6:25 to 6:30 p. m.—Stage and Screen and Police Reports.
7:00 to 7:30 p. m.—Radio Encyclopedia.
8:00 to 10:00 p. m.—Gilfillan Neutrodyne program featuring KFRC Little Symphony Orchestra.
10:00 to 12:00 p. m.—Eddie Harkness' Mark Hopkins Dance Orchestra; intermissions by Frank Gibney. "The Crooning Cowboy"; Eilene Sprague, pianist.

SATURDAY, APRIL 2

3:30 to 4:00 p. m.—Club Carlton Dance Orchestra.
6:25 to 6:30 p. m.—Stage and Screen and Police Reports.
7:00 to 7:30 p. m.—Weekly release of Orthophonic Victor Records.
8:00 p. m. to 1:00 a. m.—Eddie Harkness' Mark Hopkins Dance Orchestra; intermissions between 8 and 9 by Joe Hanson, pianist; between 9 and 10 by Juliette Dunn, soprano, and Marjorie Primley, accompanist; between 10 and 12 by Lou Emmel, baritone; Mildred Doughty, accompanist.

\$1

**RADIO BATTERIES RECHARGED
RENTAL BATTERIES FURNISHED**

\$1

Called For and Delivered—Within 4-Mile Radius
Small Added Charges over 4 Miles

LUDLUM & STEELE, Willard Dealers

965 Venice Blvd.

Call Westmore 6974

Los Angeles

San Francisco, California- -250 Meters

KFWI

500 WATTS—1200 KILOCYCLES



"Cappy" Stan Cappel
Announcer

DAILY EXCEPT SATURDAY AND SUNDAY—

6:00 to 7:00 p. m.—Dinner Hour Program.

7:00 to 8:00 p. m.—Sports, Police and Weather Reports.

WEEK COMMENCING SUNDAY, MARCH 27, 1927

SUNDAY, MARCH 27

1:00 to 2:00 p. m.—Wm. Bennett Recital, featuring Wm. Bennett, baritone; Joseph Detweiler, baritone; Thomas O'Conner, Billy Devine, tenor; Doris Halecom, pianist.
7:30 to 9:00 p. m.—Services broadcast from Fifth Church of Christ, Scientist.

MONDAY, MARCH 28

3:00 to 4:00 p. m.—Studio program.
8:00 to 10:00 p. m.—Violet Williams, soprano; Clem Kennedy, pianist; Henry and Esther Haman, tenor and pianist; Aileen Coombs, contralto; Lucille Burton, pianist; Nalda Halecom, violin; Clem Kennedy, pianist; Ella Wise, banjo, and James Dillin, saxophone.
10:00 to 12:00 p. m.—Paul Kelli's Trovatore Orchestra.

TUESDAY, MARCH 29

3:00 to 4:00 p. m.—P. S. T. Studio program.
8:00 to 8:30 p. m.—Ray Fox, Australian violinist; Charles Fry, Australian pianist, and Paul Brown, San Francisco concert pianist.
8:30 to 9:00 p. m.—Henry Warner, tenor, and Clem Kennedy, pianist.
9:00 to 10:00 p. m.—Recital by Henry Bickford Palmore and pupils.
10:00 to 12:00 p. m.—"Who's Who and Why" Club with "The Ramblers" Orchestra.

WEDNESDAY, MARCH 30

3:00 to 4:00 p. m.—Studio program.
8:00 to 8:20 p. m.—Stanley Painter, baritone; Clem Kennedy, pianist.
8:20 to 8:30 p. m.—Becker Storage program featuring the Becker Storage tenor.
8:30 to 9:00 p. m.—The Ionions (vocal, violin, 'cello and piano).
9:00 to 10:00 p. m.—"Hawaiian Hour" featuring Paul's Hawaiians.

10:00 to 12:00 p. m.—Paul Kelli's Trovatore Orchestra playing at Il Trovatore Restaurant. Studio intermission by Clem Kennedy, pianist; Bert Lamotte and Russell McNiel, and others.

THURSDAY, MARCH 31

3:00 to 4:00 p. m.—Studio program.
6:00 to 7:00 p. m.—Dinner hour program featuring Paul's Hawaiians, sponsored by San Francisco firms.
8:00 to 8:20 p. m.—Henry and Esther Haman, tenor and pianist.
8:20 to 8:40 p. m.—Robert Smalley, baritone; Nadie Siremiatnikoff, pianist.
8:40 to 9:00 p. m.—Florence Rowe, soprano, and Charlotte Owens, pianist.
9:00 to 10:00 p. m.—Maxwell House Coffee program.
10:00 to 12:00 p. m.—Paul Kelli's Trovatore Orchestra.

FRIDAY, APRIL 1

3:00 to 4:00 p. m.—Studio program.
8:00 to 8:20 p. m.—Giuseppe Carcione, dramatic tenor.
8:30 to 9:00 p. m.—The Ionions (violin, vocal, 'cello and piano).
9:00 to 10:00 p. m.—Program by the South of Market Boys, Inc.
10:00 to 12:00 p. m.—Paul Kelli's Trovatore Orchestra.

SATURDAY, APRIL 2

8:00 to 8:20 p. m.—Cowell Dien, piano and banjo.
8:20 to 8:40 p. m.—George Taylor and Clem Kennedy, harmony, tenor and basso.
8:40 to 9:00 p. m.—Carmen Berg and Teresa Farry, harmony team.
9:00 to 12:00 p. m.—Paul Kelli's Trovatore Orchestra.

DISTANCE-SELECTIVITY "DX FILTER" ACHIEVES BOTH CHILDS LAB., 1187 W. 24th ST., L. A.

The World's Best Receiver

The Super-Heterodyne is the circuit most used by leading Radio Engineers For Tone Quality, Selectivity and Distance.

We specialize on Super's, so bring us your troubles. RESULTS GUARANTEED or no charges.

SNIDER'S RADIO SERVICE

4682 Hollywood Blvd. (Just East of Vermont)

Open Evenings

Phone OLYmpia 4111

Remember we give you the same guaranteed Service on all Standard Circuits



STEPHEN I. GAYLORD
Announcer

Portland, Oregon—491.5 Meters

KGW

1000 WATTS—610 KILOCYCLES
THE MORNING OREGONIAN
"Keep Growing Wiser"

DAILY EXCEPT SUNDAY—

7:15 a. m.—Setting up exercises.
9:45 to 10:00 a. m.—Women's health exercises.
10:00 to 11:30 a. m.—Town Crier, weather reports, news items
12:30 to 1:30 p. m.—Noon concert.
6:00 to 7:00 p. m.—Dinner Concert.
7:30 to 7:45 p. m.—Weather and market reports.

WEEK COMMENCING SUNDAY, MARCH 27, 1927

SUNDAY, MARCH 27

10:55 a. m. to 12:30 p. m.—Morning service from the St. Stephens Pro-Cathedral.
4:00 to 6:00 p. m.—KGW Salon Orchestra
6:00 to 7:30 p. m.—Atwater-Kent Orchestra
7:30 to 9:00 p. m.—Evening services from the Hinson Memorial Baptist Church.
9:00 to 10:00 p. m.—Concert by the Little Symphony Orchestra.

MONDAY, MARCH 28

7:00 to 7:30 p. m.—Children's program.
8:00 to 10:00 p. m.—Vaudeville entertainment.
10:00 to 12:00 p. m.—Dance music by McElroy's Orchestra.

TUESDAY, MARCH 29

7:45 to 10:00 p. m.—Educational Program.
10:00 to 12:00 m.—Herman Kenins Orch.

WEDNESDAY, MARCH 30

8:00 to 9:00 p. m.—Concert by Seventh U. S. Infantry Band

9:00 to 10:00 p. m.—Maxwell House Coffee Orchestra program.

THURSDAY, MARCH 31

7:45 to 8:00 p. m.—Lecture, given under the auspices of the Catholic Truth Society of Oregon.
8:00 to 10:00 p. m.—Vaudeville entertainment.

FRIDAY, APRIL 1

2:00 to 3:00 p. m.—Women's matinee.
7:00 to 7:30 p. m.—Utility Service.
7:30 to 8:00 p. m.—Poultry talk.
8:00 to 9:00 p. m.—Concert by the Mission Bell Orchestra, from KGW through KFOA and KHQ.
9:00 to 10:30 p. m.—Dance music by Cole McElroy's Orchestra.

10:30 to 12:00 p. m.—Weekly frolic of the Keep Growing Wiser Order of Hoot Owls broadcast with KMO, KFOA, KHQ.

SATURDAY, APRIL 2

10:00 to 12:00 p. m.—Dance music, featuring Herman Kenin and his orchestra.

Program Published as Submitted by the Station.

Tune in KMTR, March 28th, 9:00 to 10:00 P. M., for
Radio Doings Prize Program

KEX

Portland, Oregon—447 Meters

4000 WATTS
THE WESTERN BROADCASTING COMPANY, PORTLAND

WEEK COMMENCING SUNDAY, MARCH 20, 1927

DAILY EXCEPT SUNDAY

5:30 to 6:00 p. m.—Radio code practice and daily radio chat by Clarence Clark, technical director of KEX.
6:00 to 6:30 p. m.—Children's hour by direct wire from Wrenners Chateau.
6:30 to 8:00 p. m.—Congress Hotel dinner music; Jimmie Davis and his Pompano Orchestra.
8:00 to 9:00 p. m.—Studio program.
9:00 p. m.—Western Union time signals.

TUESDAY, THURSDAY, SATURDAY

9:00 to 10:30 p. m.—Studio program.
10:30 to 12:00 p. m.—Dance Music, direct wire from Kremer's Chateau.

SUNDAY ONLY

3:00 to 5:00 p. m.—Concert orchestra.
5:00 to 6:00 p. m.—Church services.
6:00 to 8:00 p. m.—Congress Hotel dinner music.
8:00 to 9:00 p. m.—Studio program.
9:00 p. m.—Time signals, Western Union.
9:00 to 10:30 p. m.—Studio program.
10:30 to 12:00 p. m.—KEX Frolic.

Program Published as Submitted by the Station



LUTHER J. JENSEN
Announcer

Seattle, Washington—454.3 Meters

KFOA

1000 WATTS—660 KILOCYCLES
Owned and Operated by Rhodes Department Store
Arcade Square, Seattle, Washington
P. B. GALE, Station Manager
ROBT. FIERCE, Station Engineer
ARTHUR W. LINDSAY, Program Director and
Announcer
MAX WELLS, Asst. Announcer

DAILY EXCEPT SUNDAY—

12:00 to 12:15 p. m.—Local Produce News.
12:15 to 12:30—Farm News.
2:00 to 2:30 p. m.—Homemakers' and Shoppers' Bureau

WEEK COMMENCING MONDAY, MARCH 26, 1927

MONDAY, MARCH 28

6:00 to 7:00 p. m.—Radio Studios Trio.
7:00 to 7:30 p. m.—Harold Weeks in Popular Song Program.
7:30 to 8:00 p. m.—Cruise of the Sound Ferry Line Buccaneers.
8:00 to 8:30 p. m.—Industrial news by Manufacturers Association of Washington.
8:30 to 9:00 p. m.—KFOA Radio Movie Club.
9:30 to 11:00 p. m.—Bonnie Brae Dance Orchestra, remote control.

TUESDAY, MARCH 29

12:30 to 1:30 p. m.—Kiwanis Club Luncheon program from the Olympic Hotel.
7:30 to 8:00 p. m.—Pitchford Sisters.
8:00 to 8:30 p. m.—KFOA Radio Bridge Game.
8:30 to 9:30 p. m.—Cheasty's Inc. presenting Cheasty's Male Quartet.

WEDNESDAY, MARCH 30

12:30 to 1:30 p. m.—Rotary Club Luncheon program from the Olympic Hotel.
7:00 to 8:00 p. m.—Hugh Baird's Ford-O Crat Entertainers.
9:00 to 10:00 p. m.—Maxwell House Coffee Orchestra and soloists presented by Cheek-Niel Coffee Co. from KGW, Portland.

THURSDAY, MARCH 31

12:30 to 1:30 p. m.—Strine Club Luncheon program from the Chamber of Commerce Bldg.
6:30 to 7:30 p. m.—E. R. Butterworth & Sons Orchestra.

7:30 to 8:00 p. m.—Sunde & d'Evers. Tent makers.
8:00 to 8:30 p. m.—Doc Proesse "Cross-Eyed Family."
8:30 to 9:30 p. m.—Cheasty's Inc. Trio De Luxe.
10:30 to 12:00 midnight—Bonnie Brae Dance Orchestra.

FRIDAY, APRIL 1

12:30 to 1:30 p. m.—Members Council Luncheon program from Chamber of Commerce Bldg.
6:45 to 7:00 p. m.—Automobile Club of Washington.
7:00 to 8:00 p. m.—Sherman Clay & Company studio program.
8:00 to 9:00 p. m.—The Mission Bell Concert Orchestra presented by the Los Angeles Soap Co. from KGW, Portland.
9:00 to 10:30 p. m.—Hurke & Farrar's Kirkland Serenaders.
10:30 to 12:00 p. m.—Weekly Frolic of the "Keep Growing Wiser Order of Hoot Owls," broadcast from KGW, Portland.

SATURDAY, APRIL 2

7:00 to 7:30 p. m.—Children's program on the Big Blue Mona Motor Bus to KGW and KHQ.
8:30 to 9:30 p. m.—Cheasty's Inc. Dance Orchestra.

SUNDAY, APRIL 3

2:00 to 3:00 p. m.—"Roo Flying Cloud Concert Orchestra" presented by the Lamp-ling Motor Co.

Program Published as Submitted by the Station.

WE CAN ELIMINATE YOUR BATTERIES

No matter what type or model receiver you now possess we can remodel it and install a special ABC eliminator, using the new Ratheon tube, and forever relieve you of the nuisance of battery charging and replacement. Your light socket becomes your power supply and enables you to employ the new 112 or 171 power tube in your set. Absolutely no hum and the operating cost is but a fraction of a cent per hour. Our method employs absolutely no batteries, trickle chargers, or chemicals and this is the first time that such a possibility has been offered to the public.

All work done in the most complete engineering laboratory on the coast, and by competent radio technicians. The cost for such work is slight as compared with the overall increase in efficiency and freedom from battery trouble.

RADIO RECEIVER SERVICE

Allied Crafts Building

Pico and Maple Streets

Westmore 1402



FREEMAN H. TALBOT
Announcer

Denver, Colorado—322.4 Meters

KOA

930 KILOCYCLES—5000 WATTS
GENERAL ELECTRIC COMPANY
Pacific Standard Time

"Rocky Mountain Broadcasting Station"

DAILY EXCEPT SATURDAY AND SUNDAY—

10:45 a. m.—Weather, Stock and Produce Reports

5:00 p. m.—Stock and Market Reports.

5:30 p. m.—Musical Program.

DAILY EXCEPT SUNDAY—

11:15 a. m.—Organ recital.

WEEK COMMENCING SUNDAY, MARCH 27, 1927

SUNDAY, MARCH 20

- 10:00 a. m.—Service of First Baptist Church, Denver.
4:30 p. m.—Organ recital from First Baptist Church. Royce H. Mintoner, organist.
6:45 p. m.—Service from First Baptist Church, Denver.

MONDAY, MARCH 28

- 6:30 p. m.—Children's hour, Denver Public Schools.
7:00 p. m.—Instrumental program by Scheuerman's Colorado Orchestra.
7:15 p. m.—Lions Club program.

TUESDAY, MARCH 29

- 2:15 p. m.—Talk, "Fox Farming"
2:30 p. m.—Housewives' matinee.
3:30 p. m.—Question Box.
3:45 p. m.—Fashion review.
6:30 p. m.—Farm Question Box.
8:00 p. m.—Radio instruction in auction bridge, conducted by studio players.

WEDNESDAY, MARCH 30

- 6:30 p. m.—Wynken, Blynken and Nod time.
7:00 p. m.—Instrumental program by Scheuerman's Colorado Orchestra.
7:15 p. m.—Optimists Club program.

THURSDAY, MARCH 31

- 2:15 p. m.—Talk, "Architecture," given by Ella R. Milligan.
2:30 p. m.—Housewives' matinee.
3:30 p. m.—Culinary hints.
3:45 p. m.—Fashion review.
4:00 p. m.—Stocks, markets, live stock, produce and news bulletins. Silent night.

FRIDAY, APRIL 1

- 12:00 noon—Organ recital, Aladdin Theater, Denver; Viola K. Lee, organist.
2:15 p. m.—Talk, "Fox Farming."
2:30 p. m.—Housewives' matinee.
3:30 p. m.—Question Box.
3:45 p. m.—Fashion review.
6:00 p. m.—"Apple Kickoffs."
6:30 p. m.—Preview of International Sunday School lesson.
7:00 p. m.—Instrumental program, KOA Orchestra.
7:15 p. m.—Orchestra program, presented by the Colorado Underwriters' Association.
8:00 p. m.—KOA Minstrel show, by KOA Minstrel players, Freeman H. Talbot, director.

SATURDAY, APRIL 2

- 9:15 p. m.—Dance program, Scheuerman's Colorado Orchestra.

Program Published as Submitted by the Stations.

THE 1930 RECEIVER

DISTANCE
SELECTIVITY



STONE QUALITY
LESS STATIC

E. M. Sargent, Infradyne Inventor, Recommends
the

ELECTRIC LIGHTING SUPPLY CO.

C. F. BAKER

Open Saturday Evenings

216 West Third St.

TRinity 3781



RADIO'S BEST WIRE

"FROM THE GROUND UP"
*The Choice of
Amateurs and Experts*

Jobbers—

We have complete Aerial Kits
and a large stock of Copper,
Tinned and Enamel Wire

*We Can Fill Your Orders
Immediately*

Cornish Wire Co., New York, N. Y.

Factory Representatives

JAMES P. HERMANS CO.
585 Mission St., San Francisco
Douglas 2952

MARSHANK SALES CO.
224 E. 16th St., Los Angeles
WE. 8078

A Radio Set Without a Philco
Socket Power is as Obsolete as
a Car Without a Starter

\$5



DOWN

Puts a

~~PHILCO~~ Socket Power on Your Radio

Continuous, dependable, trouble
free A and B power for your radio
from your electric light current.
Liberal allowance made on your
old "A" storage battery.

PHILCO SALES & SERVICE Co.

1514 South Hope St.
Phone WESTmore 9065

*Phone or Mail Coupon for
Free Demonstration in Your Home*

Name.....
Address.....
Phone.....
Radio.....

Preston's Ground Sets Radio World by Ears

The Preston "DX" Ground, which has occupied much space in Radio Doings recently, both editorially and from an advertising standpoint, is evidently becoming the chief topic of conversation among radio enthusiasts. Preston made a short talk over Radio Station KMTR in Los Angeles last week and, according to last reports, both he and the sponsor of the program were literally snowed under with telephone calls, telegrams and letters, a goodly number of which contained orders for the ground accompanied by some of Uncle Sam's latest and best variety of United States currency.

Probably the greatest appeal of the new Preston "DX" Ground is its permanency. Radio owners have had plenty of experience with freak grounds and underground apparatus of different kinds that demonstrated lots of pep for a few days and then faded away, eaten up by their own chemicals. The Preston "DX"

Ground goes them one better in this respect. It is not only a permanent proposition but it becomes more permanent as time goes on. It actually forms, within itself, a crust of spongy copper that has puzzled many chemical sharks. It's a hard enough matter to dig copper out of the ground when it is placed there by nature, but going Mother Nature one better and growing it on the inside and outside of a copper can is a feat worth while. This unusual trait of the Preston Ground is responsible for the guarantee of permanency. Both Preston and his distributors, Ungar & Watson, Inc., insist that the longer the ground remains buried the better it gets, and a piece of old Preston Ground buried for three months was recently passed about the Radio Doings office to show the copper crust developed by the chemicals within the ground. It's a funny proposition, this radio—there's something new every minute.

MR. RADIO DEALER!

- Who Finances Your Radio Contracts?
- Are you getting quick remitting service?
- Do your customers get courteous service?
- Are you fully protected with insurance?
- Is the collection service what you would want it to be?

The Whiting Finance Co.

Offers you: Immediate remittances—friendly service and contacts with your customers—insurance and investigation protection—a profitable and satisfactory finance connection.

Give Us a Call

At 326 Union Oil Building, Los Angeles.
Phone TRinity 6781.

Timely Trade Topics

Carl A. Stone, Jr., arrived in Los Angeles via the California Lutheran Hospital on Monday, March 21. Carl, Sr., has told us for some weeks past that he was contemplating taking on a new loud speaker, and now we hope that this "unit" will prove a "howling" success and that this "pebble" will be but a start in a large Stone family. Congratulations.

The Myers Electric Supply Company, Southern California distributors for Shamrock receivers, gave a St. Patrick's Day party for their dealers at their wholesale establishment and gave away numerous prizes. They also sponsored a program, from 5:30 to 6:30, over KFWB. On the same day, from 9 to 10 p. m., the Shamrock Manufacturing Company, through their local representative, Carl A. Stone, sponsored a program over the same station, featuring Irish melodies and songs.

Herbert H. Horn, 1629 South Hill street, Los Angeles, has added Tab rechargeable A and B batteries and Jefferson products to the lines he is distributing.

C. D. Tanner Company, 4154 South Vermont street, Los Angeles, report the theft of a Neutroflex Portable set, the serial number being 1055. If anyone offers this set for sale, please call the Tanner Company. VERmont 7905.

W. D. Scott of the Scott Sales Co., representatives of the George E. Browning Co., manufacturers of Anten-Affminator, is visiting the factory in Ogden, Utah. Scotty reports a very excellent business on this item.

A. J. Tobey Company entertained their dealers at Eagle's Hall on Friday, March 18, at a Philco Courtesy Sales Meeting. Prizes were awarded to the winners of the selling, display and court-

esy contest. A. J. Tobey, of the Tobey Company, and Harry Fore of the Philco Storage Battery Company, addressed the meeting, and entertainment was provided by Rogers' Hiwaian Trio; Little Boy Blue and Uncle Remus.

The Yale Radio Electric Company are carrying a very complete stock of all the standard parts lines, stocking over 485 radio items. They report an excellent parts business and find a great deal of interest in the new Quadrformer Kits used in building the Best Quadrphase Circuit, recommended by Gerald Best in the April issue of Radio.

Mr. C. H. Johnston, Fada Specialty Salesman for The Electric Corporation of 11th and Santee streets, Los Angeles, California, has joined the sales force of the Pacific Wholesale, Inc., 1310 S. San Pedro street, Los Angeles. Mr. Johnston has been in the merchandising end of the Electrical and Radio business for many years. He will specialize on selling Freed Elseman Neutrodyne Receivers.

The firm of Twining and Scott have moved to their new plant at 215 E. Washington St., where they have secured a ten-year lease on the entire building at that address. The motto of Twining and Scott will be, as always, "Service When You Want It."

The next meeting of the Radio Manufacturers' Agents Association of Southern California will be held at the Elite, 633 So. Flower St., Los Angeles, at noon, Friday, March 25. Members please note new place of meeting.

Messrs. Huse and White of Detch & Company, representatives of the Sterling lines, report a very excellent business in this line since the first of the year.

BOTH SIDES OF THE "MIKE"



NEW RADIO TENOR?

The other evening the manager of a concern which sponsors programs broadcasted over station KNX, chanced to be listening in to KFWD and heard a tenor solo which appealed to him very strongly. He promptly called Manager Glen Rice at KNX on the telephone.

"Mr. Rice, there is a chap singing over KFWD right now that I would very much like to have on our next program. Will you try and get him for me, please?"

The genial manager of KNX assured the gentleman that every effort would be made and called Gerald King at Warner Brothers' station.

"Say, King; that tenor you've got over there who was singing just a few minutes ago. We would like to use him on so-and-so's program next Thursday. Can we get him?"

"I think so," Gerald replied. "But it will cost you plenty. And then, again, I doubt if he could get here by next Thursday."

"How come?" asked Glen.

"Well, you see, it was John McCormack, and he is only here by proxy, so to speak, through the medium of a Victrola Orthophonic record."

KHJ's BIRTHDAY

The fifth birthday musical treat from KHJ, in Los Angeles, will be in the form of a continuous broadcast beginning at noon on April 13th and continuing until midnight and even thereafter.

Each hour of the broadcast will be divided into quarters. The first quarter of each hour will hear a radio orchestra and each third quarter will bring to radioland some outstanding speaker.

The second and fourth quarter periods of each hour will be given over to vocal and instrumental soloists and ensembles.

In the five years of its existence, the Los Angeles pioneer station has presented many outstanding figures to radioland. It was in its studio that Mary Garden made her radio debut. Even Mary Pickford and Douglas Fairbanks enjoyed their first broadcast experience up in the studio of KHJ, despite the fact that many Eastern stations have also claimed that honor.

The chirping of a tiny cricket in the Los Angeles studio was successfully broadcast and heard in Australia. The children's hour, one of the first before a microphone, has enjoyed wide popularity and made a host of friends for the station.

SHE HIT "HIGH C"

It was at KMTR. A lot of noses were pressed against the plate glass to watch the antics of G. Allison and his performing artists. The orchestra had just completed a number and Irmalee Campbell stepped forward to sing "Qui La Vochi."

Phillip Musgrave of the orchestra left his chair near the microphone to deposit his 'cello in a safe place. Meanwhile, Miss Campbell in her approach to the "mike" moved Phillip's chair out of the way, unbeknown to the latter, who backed up to where he had left it and sat down!

On the way down his elbow came into rather violent contact with Irmalee's wind-container, and the note which issued from her throat was far from what might be called pianissimo. She bravely went right on singing, with the surprised Phillip in a heap at her feet.

This file including all text and images are from scans of a private personal collection and have been scanned for archival and research purposes. This file may be freely distributed, but not sold on ebay or on any commercial sites, catalogs, booths or kiosks, either as reprints or by electronic methods. This file may be downloaded without charge from the Radio Researchers Group website at <http://www.otrr.org/>

Please help in the preservation of old time radio by supporting legitimate organizations who strive to preserve and restore the programs and related information.